



Recombinant Human Pulmonary surfactant-associated protein D (SFTPD)

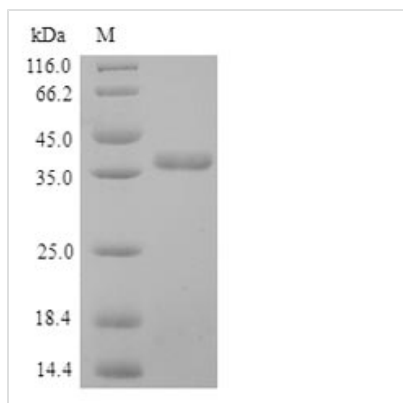
Product Code	CSB-YP021175HU
Relevance	Contributes to the lung's defense against inhaled microorganisms, organic antigens and toxins. Interacts with compounds such as bacterial lipopolysaccharides, oligosaccharides and fatty acids and modulates leukocyte action in immune response. May participate in the Extracellular domain reorganization or turnover of pulmonary surfactant. Binds strongly maltose residues and to a lesser extent other alpha-glucosyl moieties.
Abbreviation	Recombinant Human SFTPD protein
Storage	The shelf life is related to many factors, storage state, buffer ingredients, storage temperature and the stability of the protein itself. Generally, the shelf life of liquid form is 6 months at -20°C/-80°C. The shelf life of lyophilized form is 12 months at -20°C/-80°C.
Uniprot No.	P35247
Alias	Collectin-7 Lung surfactant protein D
Product Type	Recombinant Protein
Immunogen Species	Homo sapiens (Human)
Purity	Greater than 90% as determined by SDS-PAGE.
Sequence	AEMKTYSHRTMPSEACTLVMCSSVESGLPGRDGRDREGPRGEKGDPLPG AAGQAGMPGQAGPVGPKGDNGSVGEPGPKGDTGPSGPPGPPGVPGPAGR EGPLGKQGNIGPQGKPGPKGEAGPKGEVGAPGMQGSAGARGLAGPKGERG VPGERGVPGNTGAAGSAGAMGPQGSPGARGPPGLKGDGKIPGDKGAKGES GLPDVASLRQQVEALQGGVQHLQAAFSQYKKVELFPNGQSVGEKIFKTAGFV KPFTEAQLLCTQAGGQLASPRSAENAALQQLVVAKNEAAFLSMTDSKTEGK FTYPTGESLVYSNWAPGEPNDDGGSEDCVEIF
Research Area	Cancer
Source	Yeast
Target Names	SFTPD
Protein Names	Recommended name: Pulmonary surfactant-associated protein D Short name= PSP-D Short name= SP-D Alternative name(s): Collectin-7 Lung surfactant protein D
Expression Region	21–375aa
Notes	Repeated freezing and thawing is not recommended. Store working aliquots at 4°C for up to one week.
Tag Info	N-terminal 6xHis-tagged
Mol. Weight	35.2kDa



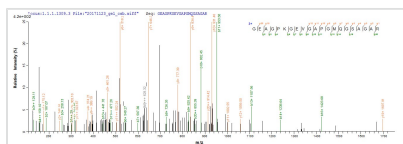
Protein Length

Full Length of Mature Protein

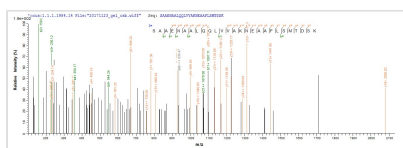
Image



(Tris-Glycine gel) Discontinuous SDS-PAGE (reduced) with 5% enrichment gel and 15% separation gel.



Based on the SEQUEST from database of Yeast host and target protein, the LC-MS/MS Analysis result of CSB-YP021175HU could indicate that this peptide derived from Yeast-expressed Homo sapiens (Human) SFTPD.



Based on the SEQUEST from database of Yeast host and target protein, the LC-MS/MS Analysis result of CSB-YP021175HU could indicate that this peptide derived from Yeast-expressed Homo sapiens (Human) SFTPD.

Reconstitution

We recommend that this vial be briefly centrifuged prior to opening to bring the contents to the bottom. Please reconstitute protein in deionized sterile water to a concentration of 0.1-1.0 mg/mL. We recommend to add 5-50% of glycerol (final concentration) and aliquot for long-term storage at -20°C/-80°C. Our default final concentration of glycerol is 50%. Customers could use it as reference.

Shelf Life

The shelf life is related to many factors, storage state, buffer ingredients, storage temperature and the stability of the protein itself. Generally, the shelf life of liquid form is 6 months at -20°C/-80°C. The shelf life of lyophilized form is 12 months at -20°C/-80°C.