

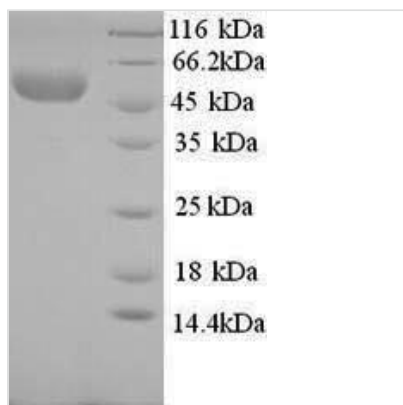


Recombinant Rabbit E-selectin (SELE), partial

Product Code	CSB-YP020975RB
Relevance	Cell-surface glycoprotein having a role in immunoadhesion. Mediates in the adhesion of blood neutrophils in cytokine-activated endothelium through interaction with PSGL1/SELPLG. May have a role in capillary morphogenesis .
Abbreviation	Recombinant Rabbit SELE protein, partial
Storage	The shelf life is related to many factors, storage state, buffer ingredients, storage temperature and the stability of the protein itself. Generally, the shelf life of liquid form is 6 months at -20°C/-80°C. The shelf life of lyophilized form is 12 months at -20°C/-80°C.
Uniprot No.	P27113
Alias	CD62 antigen-like family member EEndothelial leukocyte adhesion molecule 1 ;ELAM-1Leukocyte-endothelial cell adhesion molecule 2 ;LECAM2;; CD62E
Product Type	Recombinant Protein
Immunogen Species	Oryctolagus cuniculus (Rabbit)
Purity	Greater than 90% as determined by SDS-PAGE.
Sequence	<p>WTYHFS AENMTYDEASAYCQQNYTHLVAIQNK EEIDY LNSILDYSPSYWIGIR</p> <p>KVNNVWIWVGTHKPLTEGAKNWAPGEPNNKQNNEDCVEIYIKRPKDTGMWN</p> <p>DERCSKKKLALCYTAACTEASCSGHGECIETINNYSCKCPYGFSGLKCEQVVT</p> <p>CEAQVQPQHGS LNCTHPLGNFSYNSSCSVSCERGYLPSSTETTWTCTSSGEW</p> <p>SAPPATCKVVECDTMGKPANGDVKCSPSQGSAPWNTTCTFDCEE GFTLLGA</p> <p>RSLQCTSSGSWDNEKPTCKAVSCDTIHHPQNGSVSCSNSSSEGKFTFRSSCNF</p> <p>TCEENFLLRGPAQVECTAQQQWTQQAPVCEAVKCDPVHTLEDG FVKCTHPH</p> <p>TGEFTYKSSCTFNCREGFELHGSAQLECTSQGQWAQELPSCQVVQCPSLAVL</p> <p>GKTNVSCSGEPVFGTVCNFACPEGWTLNGSAALMCGAEGQWSGMLPTCEE</p> <p>PIASNVP</p>
Research Area	Others
Source	Yeast
Target Names	SELE
Protein Names	Recommended name: E-selectin Alternative name(s): CD62 antigen-like family member E Endothelial leukocyte adhesion molecule 1 Short name= ELAM-1 Leukocyte-endothelial cell adhesion molecule 2 Short name= LECAM2 CD_antigen
Expression Region	24-495aa
Notes	Repeated freezing and thawing is not recommended. Store working aliquots at 4°C for up to one week.
Tag Info	N-terminal 6xHis-tagged
Mol. Weight	53.6kDa
Protein Length	Extracellular Domain



Image



(Tris-Glycine gel) Discontinuous SDS-PAGE (reduced) with 5% enrichment gel and 15% separation gel.

Description

The synthesis of Recombinant Rabbit SELE protein began with the isolation of SELE gene from the native genome. The next step was to amplify the SELE gene by inserting the SELE gene into an expression vector and then introducing the vector into the selected host cell, Yeast. Significant amounts of recombinant Rabbit SELE protein were produced by the host only when expression genes were added. For the purpose of protein purification, the vector contains N-terminal 6xHis tag to the SELE DNA sequence. The purity of this protein is 90%+ determined by SDS-PAGE.

SELE is a gene encoding a protein named E-selectin (SELE) in various mammals. The protein encoded by this gene is also known as CD62 antigen-like family member E, endothelial leukocyte adhesion molecule 1 (ELAM-1), Leukocyte-endothelial cell adhesion molecule 2 (LECAM2) and CD62E. It is a selectin cell adhesion molecule expressed only on endothelial cells activated by cytokines. It is involved in two processes, including cell adhesion and positive regulation of leukocyte tethering or rolling.

Reconstitution

We recommend that this vial be briefly centrifuged prior to opening to bring the contents to the bottom. Please reconstitute protein in deionized sterile water to a concentration of 0.1-1.0 mg/mL. We recommend to add 5-50% of glycerol (final concentration) and aliquot for long-term storage at -20°C/-80°C. Our default final concentration of glycerol is 50%. Customers could use it as reference.

Shelf Life

The shelf life is related to many factors, storage state, buffer ingredients, storage temperature and the stability of the protein itself. Generally, the shelf life of liquid form is 6 months at -20°C/-80°C. The shelf life of lyophilized form is 12 months at -20°C/-80°C.