

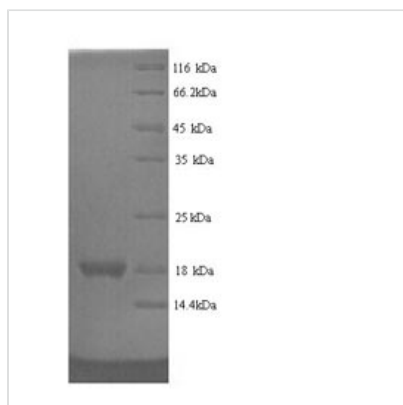


# Recombinant Rat Regenerating islet-derived protein 3-gamma (Reg3g)

<b>Product Code</b>	CSB-YP019549RA
<b>Relevance</b>	Bactericidal C-type lectin which acts exclusively against Gram-positive bacteria and mediates bacterial killing by binding to surface-exposed carbohydrate moieties of peptidoglycan. Restricts bacterial colonization of the intestinal epithelial surface and consequently limits activation of adaptive immune responses by the microbiota. The uncleaved form has bacteriostatic activity, whereas the cleaved form has bactericidal activity against <i>L.monocytogenes</i> and methicillin-resistant <i>S.aureus</i> . Regulates keratinocyte proliferation and differentiation after skin injury .
<b>Abbreviation</b>	Recombinant Rat Reg3g protein
<b>Storage</b>	The shelf life is related to many factors, storage state, buffer ingredients, storage temperature and the stability of the protein itself. Generally, the shelf life of liquid form is 6 months at -20°C/-80°C. The shelf life of lyophilized form is 12 months at -20°C/-80°C.
<b>Uniprot No.</b>	P42854
<b>Alias</b>	Pancreatitis-associated protein 3Regenerating islet-derived protein III-gamma ;Reg III-gamma
<b>Product Type</b>	Recombinant Protein
<b>Immunogen Species</b>	Rattus norvegicus (Rat)
<b>Purity</b>	Greater than 90% as determined by SDS-PAGE.
<b>Sequence</b>	EDAKEDVPTSRISCPKGSRAYGSYCYALFSVSKSWFDADLACQKRPSGHLVS VLSGSEASFVSSLIKSSGNSGQNVWIGLHDPTLGQEPNRGGWEWSNADVMN YFNWETNPSSVSGSHCGTLTRASGFLRWRENNCISELPYVCKFKA
<b>Research Area</b>	Others
<b>Source</b>	Yeast
<b>Target Names</b>	Reg3g
<b>Protein Names</b>	Recommended name: Regenerating islet-derived protein 3-gamma Short name= REG-3-gamma Alternative name(s): Pancreatitis-associated protein 3 Regenerating islet-derived protein III-gamma Short name= Reg III-gamma
<b>Expression Region</b>	27-174aa
<b>Notes</b>	Repeated freezing and thawing is not recommended. Store working aliquots at 4°C for up to one week.
<b>Tag Info</b>	N-terminal 6xHis-tagged
<b>Mol. Weight</b>	18.3kDa
<b>Protein Length</b>	Full Length of Mature Protein



## Image



(Tris-Glycine gel) Discontinuous SDS-PAGE (reduced) with 5% enrichment gel and 15% separation gel.

## Reconstitution

We recommend that this vial be briefly centrifuged prior to opening to bring the contents to the bottom. Please reconstitute protein in deionized sterile water to a concentration of 0.1-1.0 mg/mL. We recommend to add 5-50% of glycerol (final concentration) and aliquot for long-term storage at -20°C/-80°C. Our default final concentration of glycerol is 50%. Customers could use it as reference.

## Shelf Life

The shelf life is related to many factors, storage state, buffer ingredients, storage temperature and the stability of the protein itself. Generally, the shelf life of liquid form is 6 months at -20°C/-80°C. The shelf life of lyophilized form is 12 months at -20°C/-80°C.