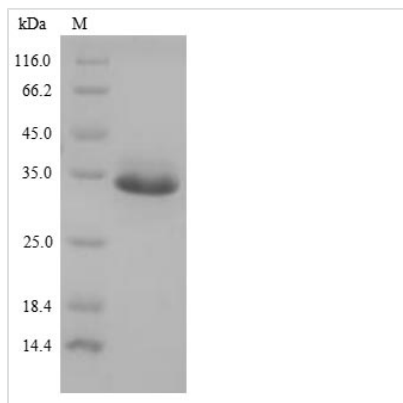




Recombinant Bovine Enteropeptidase (TMPRSS15), partial

Product Code	CSB-YP018824BO
Relevance	Responsible for initiating activation of pancreatic proteolytic proenzymes (trypsin, chymotrypsin and carboxypeptidase A). It catalyzes the conversion of trypsinogen to trypsin which in turn activates other proenzymes including chymotrypsinogen, procarboxypeptidases, and proelastases.
Abbreviation	Recombinant Bovine TMPRSS15 protein, partial
Storage	The shelf life is related to many factors, storage state, buffer ingredients, storage temperature and the stability of the protein itself. Generally, the shelf life of liquid form is 6 months at -20°C/-80°C. The shelf life of lyophilized form is 12 months at -20°C/-80°C.
Uniprot No.	P98072
Product Type	Recombinant Protein
Immunogen Species	Bos taurus (Bovine)
Purity	Greater than 85% as determined by SDS-PAGE.
Sequence	IVGGSDSREGAWPWVVALYFDDQQVCGASLVSRDWLVSAAHCVYGRNMEP SKWKAVLGLHMASNLTSPQIETRLIDQIVINPHYNKRRKNNDIAMMHLEMKVNY TDYIQPICLPEENQVFPPGRICSIAGWGALIYQGSTADVLQEADVPLLSNEKCQ QQMPEYNITENMVCAGYEAGGVDSQCQGDSSGGPLMCQENNRWLLAGVTSFG YQCALPNRPGVYARVPRFTEWISFLH
Research Area	Cell Biology
Source	Yeast
Target Names	TMPRSS15
Protein Names	Enterokinase Serine protease 7 Transmembrane protease serine 15 ENTK, PRSS7
Expression Region	801-1035
Notes	Repeated freezing and thawing is not recommended. Store working aliquots at 4°C for up to one week.
Tag Info	C-terminal 6xHis-tagged
Mol. Weight	28.3 kDa
Protein Length	Partial
Image	



(Tris-Glycine gel) Discontinuous SDS-PAGE (reduced) with 5% enrichment gel and 15% separation gel.

Reconstitution

We recommend that this vial be briefly centrifuged prior to opening to bring the contents to the bottom. Please reconstitute protein in deionized sterile water to a concentration of 0.1-1.0 mg/mL. We recommend to add 5-50% of glycerol (final concentration) and aliquot for long-term storage at -20°C/-80°C. Our default final concentration of glycerol is 50%. Customers could use it as reference.

Shelf Life

The shelf life is related to many factors, storage state, buffer ingredients, storage temperature and the stability of the protein itself. Generally, the shelf life of liquid form is 6 months at -20°C/-80°C. The shelf life of lyophilized form is 12 months at -20°C/-80°C.