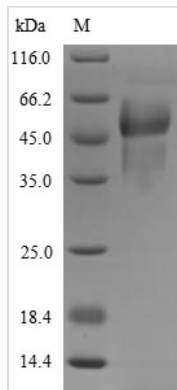




Recombinant Rat Vitamin K-dependent protein C (Proc)

Product Code	CSB-YP018742RA
Relevance	Protein C is a vitamin K-dependent serine protease that regulates blood coagulation by inactivating factors Va and VIIIa in the presence of calcium ions and phospholipids. Exerts a protective effect on the endothelial cell barrier function.
Abbreviation	Recombinant Rat Proc protein
Storage	The shelf life is related to many factors, storage state, buffer ingredients, storage temperature and the stability of the protein itself. Generally, the shelf life of liquid form is 6 months at -20°C/-80°C. The shelf life of lyophilized form is 12 months at -20°C/-80°C.
Uniprot No.	P31394
Product Type	Recombinant Protein
Immunogen Species	Rattus norvegicus (Rat)
Purity	Greater than 85% as determined by SDS-PAGE.
Sequence	ANSFLEEVVAGSLERECMEEICDFEEAQEIFQNVEDTLAFWIKYFDGDQCSTP PLDHQCDSPCCGHGTCIDGLGGFSCSCDKGWEGRFCQQEMGFQDCRVKNG GCYHYCLEETRGRRCRCAPGYELADDHMHCRPTVNFPCGKLWKRTDKKRKN FKRDIDPEDEELELGPRIVNGTLTKQGDSPWQAILLDSKKKLACGGVLIHTSWV LTAHCLESSKKLTVRLGEYDLRRRDPWELDLDIKEVLVHPNYTRSNSDNDIAL LRLSQPATLSKTIVPICLPNSGLAQELSQAGQETVVTGWGYQSDKVKDGRRNR TFILTFIRIPLAARNDCMQVMNNVSENMLCAGIIGDTRDACDGDSSGGPMVVF RGTWFLVGLVSWGEGCGHLNNYGVYTKVGSYLVKWIHSYIGERDVSLKSPKL
Research Area	Cardiovascular
Source	Yeast
Target Names	Proc
Protein Names	Anticoagulant protein C Autoprothrombin IIA Blood coagulation factor XIV
Expression Region	42-461aa
Notes	Repeated freezing and thawing is not recommended. Store working aliquots at 4°C for up to one week.
Tag Info	N-terminal 6xHis-tagged
Mol. Weight	49.3 kDa
Protein Length	Full Length of Mature Protein
Image	



(Tris-Glycine gel) Discontinuous SDS-PAGE (reduced) with 5% enrichment gel and 15% separation gel.

Reconstitution

We recommend that this vial be briefly centrifuged prior to opening to bring the contents to the bottom. Please reconstitute protein in deionized sterile water to a concentration of 0.1-1.0 mg/mL. We recommend to add 5-50% of glycerol (final concentration) and aliquot for long-term storage at -20°C/-80°C. Our default final concentration of glycerol is 50%. Customers could use it as reference.

Shelf Life

The shelf life is related to many factors, storage state, buffer ingredients, storage temperature and the stability of the protein itself. Generally, the shelf life of liquid form is 6 months at -20°C/-80°C. The shelf life of lyophilized form is 12 months at -20°C/-80°C.