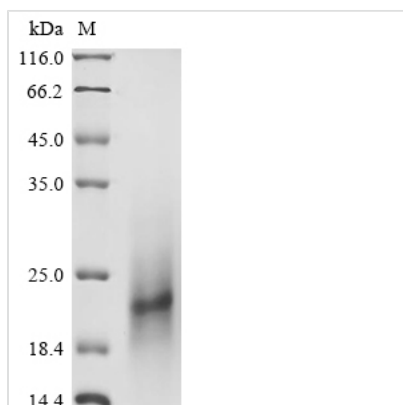




# Recombinant Human Proteoglycan 4 (PRG4), partial

<b>Product Code</b>	CSB-YP018672HU
<b>Relevance</b>	Plays a role in boundary lubrication within articulating joints. Prevents protein deposition onto cartilage from synovial fluid by controlling adhesion-dependent synovial growth and inhibiting the adhesion of synovial cells to the cartilage surface. Isoform F plays a role as a growth factor acting on the primitive cells of both hematopoietic and endothelial cell lineages.
<b>Abbreviation</b>	Recombinant Human Prg4 protein, partial
<b>Storage</b>	The shelf life is related to many factors, storage state, buffer ingredients, storage temperature and the stability of the protein itself. Generally, the shelf life of liquid form is 6 months at -20°C/-80°C. The shelf life of lyophilized form is 12 months at -20°C/-80°C.
<b>Uniprot No.</b>	Q92954
<b>Product Type</b>	Recombinant Protein
<b>Immunogen Species</b>	Homo sapiens (Human)
<b>Purity</b>	Greater than 85% as determined by SDS-PAGE.
<b>Sequence</b>	QDLSSCAGRCGEGYSRDATCNCQHYMECCPDFKRVCTAELSCKGRCF ESFERGRECDCAQCKKYDKCCPDYESFCAEVHNPTSPSSKKAPPPSGAS QTIKSTTKRSPKPPNKKKTKKVIIESEEITE
<b>Research Area</b>	Signal Transduction
<b>Source</b>	Yeast
<b>Target Names</b>	PRG4
<b>Protein Names</b>	LubricinMegakaryocyte-stimulating factorSuperficial zone proteoglycanCleaved into the following chain:Proteoglycan 4 C-terminal partMSF, SZP
<b>Expression Region</b>	25-156aa
<b>Notes</b>	Repeated freezing and thawing is not recommended. Store working aliquots at 4°C for up to one week.
<b>Tag Info</b>	N-terminal 6xHis-tagged
<b>Mol. Weight</b>	19.5 kDa
<b>Protein Length</b>	Partial
<b>Image</b>	



(Tris-Glycine gel) Discontinuous SDS-PAGE (reduced) with 5% enrichment gel and 15% separation gel.

### Reconstitution

We recommend that this vial be briefly centrifuged prior to opening to bring the contents to the bottom. Please reconstitute protein in deionized sterile water to a concentration of 0.1-1.0 mg/mL. We recommend to add 5-50% of glycerol (final concentration) and aliquot for long-term storage at -20°C/-80°C. Our default final concentration of glycerol is 50%. Customers could use it as reference.

### Shelf Life

The shelf life is related to many factors, storage state, buffer ingredients, storage temperature and the stability of the protein itself. Generally, the shelf life of liquid form is 6 months at -20°C/-80°C. The shelf life of lyophilized form is 12 months at -20°C/-80°C.