



Recombinant Human Phospholipid transfer protein (PLTP)

Product Code	CSB-YP018212HU
Relevance	Facilitates the transfer of a spectrum of different lipid molecules, including diacylglycerol, phosphatidic acid, sphingomyelin, phosphatidylcholine, phosphatidylglycerol, cerebroside and phosphatidyl ethanolamine. Essential for the transfer of excess surface lipids from triglyceride-rich lipoproteins to HDL, thereby facilitating the formation of smaller lipoprotein rnants, contributing to the formation of LDL, and assisting in the maturation of HDL particles. PLTP also plays a key role in the uptake of cholesterol from peripheral cells and tissues that is subsequently transported to the liver for degradation and excretion. Two distinct forms of PLTP exist in plasma: an active form that can transfer PC from phospholipid vesicles to high-density lipoproteins (HDL), and an inactive form that lacks this capability.
Abbreviation	Recombinant Human PLTP protein
Storage	The shelf life is related to many factors, storage state, buffer ingredients, storage temperature and the stability of the protein itself. Generally, the shelf life of liquid form is 6 months at -20°C/-80°C. The shelf life of lyophilized form is 12 months at -20°C/-80°C.
Uniprot No.	P55058
Alias	Lipid transfer protein II
Product Type	Recombinant Protein
Immunogen Species	Homo sapiens (Human)
Purity	Greater than 90% as determined by SDS-PAGE.
Sequence	EFPGCKIRVTSKALELVKQEGLRFLEQELETITIPDLRGKEGHFYYNISEVKVTE LQLTSSSELDLFPQQELMLQITNASLGLRFRRLLYWFFYDGGYINASAEGVSIR TGLELSRDPAGRMKVSNSVSCQASVSRMHAAFGGTFKKVYDFLSTFITSGMRF LLNQQICPVLYHAGTVLLNSLLDTPVRSSVDELVGIDYSLMKDPVASTSNLDM DFRGAFFPLTERNWSLPNRAVEPQLQEEERMVYVAFSEFFFDSESYFRAG ALQLLLVGDKVPHDLDMLLRATYFGSIVLLSPAVIDSPLKLELRVLAPPRCTIKPS GTTISVTASVTIALVPPDQPEVQLSSMTMDARLSAKMALRGKALRTQLDLRRF RIYSNHSALSLALIPQLKAPLKTMLQIGVMPMLNERTWRGVQIPLPEGINFVHEV VTNHAGFLTIGADLHFAKGLREVIEKNRPADVRASTAPTSTAAS
Research Area	Transport
Source	Yeast
Target Names	PLTP
Protein Names	Recommended name: Phospholipid transfer protein Alternative name(s): Lipid transfer protein II
Expression Region	18-493aa



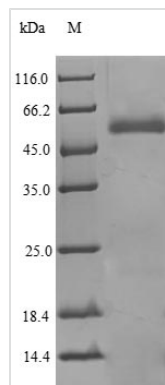
Notes Repeated freezing and thawing is not recommended. Store working aliquots at 4°C for up to one week.

Tag Info N-terminal 6xHis-tagged

Mol. Weight 55.1kDa

Protein Length Full Length of Mature Protein

Image



(Tris-Glycine gel) Discontinuous SDS-PAGE (reduced) with 5% enrichment gel and 15% separation gel.

Reconstitution We recommend that this vial be briefly centrifuged prior to opening to bring the contents to the bottom. Please reconstitute protein in deionized sterile water to a concentration of 0.1-1.0 mg/mL. We recommend to add 5-50% of glycerol (final concentration) and aliquot for long-term storage at -20°C/-80°C. Our default final concentration of glycerol is 50%. Customers could use it as reference.

Shelf Life The shelf life is related to many factors, storage state, buffer ingredients, storage temperature and the stability of the protein itself. Generally, the shelf life of liquid form is 6 months at -20°C/-80°C. The shelf life of lyophilized form is 12 months at -20°C/-80°C.