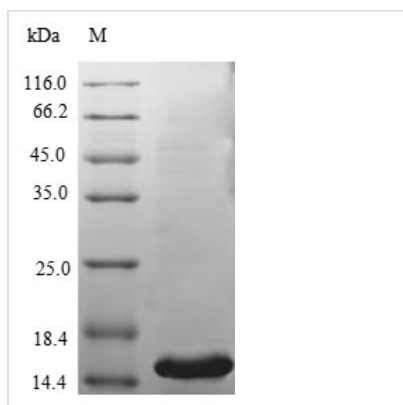




Recombinant Human Phospholipase A2 group V (PLA2G5)

Product Code	CSB-YP018103HU
Relevance	PA2 catalyzes the calcium-dependent hydrolysis of the 2-acyl groups in 3-sn-phosphoglycerides. This isozyme hydrolyzes more efficiently L-alpha-1-palmitoyl-2-oleoyl phosphatidylcholine than L-alpha-1-palmitoyl-2-arachidonyl phosphatidylcholine, L-alpha-1-palmitoyl-2-arachidonyl phosphatidylethanolamine, or L-alpha-1-stearoyl-2-arachidonyl phosphatidylinositol. May be involved in the production of lung surfactant, the remodeling or regulation of cardiac muscle.
Abbreviation	Recombinant Human PLA2G5 protein
Storage	The shelf life is related to many factors, storage state, buffer ingredients, storage temperature and the stability of the protein itself. Generally, the shelf life of liquid form is 6 months at -20°C/-80°C. The shelf life of lyophilized form is 12 months at -20°C/-80°C.
Uniprot No.	P39877
Alias	Group V phospholipase A2 PLA2-10 Phosphatidylcholine 2-acylhydrolase 5
Product Type	Recombinant Protein
Immunogen Species	Homo sapiens (Human)
Purity	Greater than 90% as determined by SDS-PAGE.
Sequence	GLLDLKSMIEKVTGKNALTNYGFGCYCGWGGRGTPKDGTDWCCWAHDHC YGRLEEKGCNIRTQSYKYRFAWGVVTCEPGPFCHVNLACDRKLVYCLKRNL RSYNPQYQYFPNILCS
Research Area	Cardiovascular
Source	Yeast
Target Names	PLA2G5
Protein Names	Recommended name: Calcium-dependent phospholipase A2 EC=3.1.1.4 Alternative name(s): Group V phospholipase A2 PLA2-10 Phosphatidylcholine 2-acylhydrolase 5
Expression Region	21-138aa
Notes	Repeated freezing and thawing is not recommended. Store working aliquots at 4°C for up to one week.
Tag Info	N-terminal 6xHis-tagged
Mol. Weight	15.6kDa
Protein Length	Full Length of Mature Protein
Image	



(Tris-Glycine gel) Discontinuous SDS-PAGE (reduced) with 5% enrichment gel and 15% separation gel.

Reconstitution

We recommend that this vial be briefly centrifuged prior to opening to bring the contents to the bottom. Please reconstitute protein in deionized sterile water to a concentration of 0.1-1.0 mg/mL. We recommend to add 5-50% of glycerol (final concentration) and aliquot for long-term storage at -20°C/-80°C. Our default final concentration of glycerol is 50%. Customers could use it as reference.

Shelf Life

The shelf life is related to many factors, storage state, buffer ingredients, storage temperature and the stability of the protein itself. Generally, the shelf life of liquid form is 6 months at -20°C/-80°C. The shelf life of lyophilized form is 12 months at -20°C/-80°C.