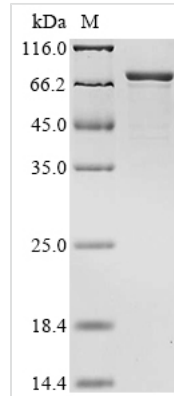




Recombinant Rat Neurofilament light polypeptide (Nefl)

Product Code	CSB-YP015688RA
Abbreviation	Recombinant Rat Nefl protein
Storage	The shelf life is related to many factors, storage state, buffer ingredients, storage temperature and the stability of the protein itself. Generally, the shelf life of liquid form is 6 months at -20°C/-80°C. The shelf life of lyophilized form is 12 months at -20°C/-80°C.
Uniprot No.	P19527
Product Type	Recombinant Proteins
Immunogen Species	Rattus norvegicus (Rat)
Purity	Greater than 85% as determined by SDS-PAGE.
Sequence	SSFSYEPYFSTSYKRRYVETPRVHISSVRSGYSTARSAYSSYSAPVSSSLSVR RSYSSSSGSLMPLENLDLSQVAAISNDLKSIRTQEKAQLQDLNDRFASFIERV HELEQQNKVLEAELLVLRQKHSEPSRFRALYEQEIRDLRLAAEDATNEKQALQ GEREGLEETLRNLQARYEEEEVLSREDAEGRLMEARKGADEAALARAELEKRID SLMDEIAFLKKVHEEEIAELQAQIQYQAQISVEMDVSSKPDLSAALKDIRAQYEKL AAKNMQNAEEWFKSRFTVLTESAANKNTDAVRAAKDEVSESRLLKAKTLEIEA CRGMNEALEKQLQELEDKQNADISAMQDTINKLENELRSTKSEMARYLKEYQ DLLNVKMALDIEIAAYRKLLEGEETRLSFTSVGSITSGYSQSSQVFGRSAYSGL QSSSYLMSARAFPAYYTSHVQEEQSEVEETIEATKAEAAKDEPPSEGEAEED KEKEEGEEEEGAEEEEAAKDESEDAKEEEGGEGEEEDTKESEEEEEKKEESAG EEQAAKKKD
Research Area	Neuroscience
Source	Yeast
Target Names	Nefl
Protein Names	Recommended name: Neurofilament light polypeptide Short name= NF-L Alternative name(s): 68 kDa neurofilament protein Neurofilament triplet L protein
Expression Region	2-542aa
Notes	Repeated freezing and thawing is not recommended. Store working aliquots at 4°C for up to one week.
Tag Info	N-terminal 6xHis-tagged
Mol. Weight	63.2
Protein Length	Full Length of Mature Protein
Image	



(Tris-Glycine gel) Discontinuous SDS-PAGE (reduced) with 5% enrichment gel and 15% separation gel.

Description

The gene sequence corresponding to amino acids 2-542 of the rat NEFL protein is expressed in the yeast. The 6xHis-tag is fused to the protein at the N-terminus. The resulting product is the full length of mature recombinant NEFL protein. Its purity is greater than 85% determined by SDS-PAGE. Its theoretical molecular weight is 63.2 kDa. The target protein NEFL is the light chain of neurofilament, which is a biomarker for axonal damage in a wide range of neurological disorders. Studies have also found that NEFL may play a role in cancer cell apoptosis and invasion.

Shelf Life

The shelf life is related to many factors, storage state, buffer ingredients, storage temperature and the stability of the protein itself.

Generally, the shelf life of liquid form is 6 months at -20°C/-80°C. The shelf life of lyophilized form is 12 months at -20°C/-80°C.