

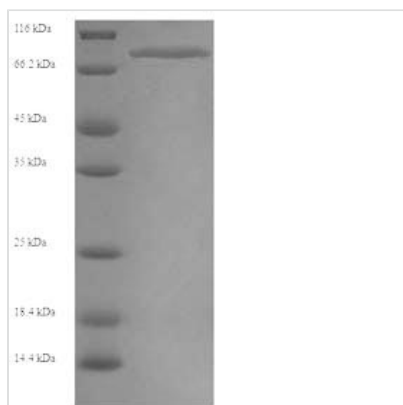


Recombinant Human Myosin-6 (MYH6), partial

| | |
|--------------------------|---|
| Product Code | CSB-YP015299HU |
| Relevance | Muscle contraction. |
| Abbreviation | Recombinant Human MYH6 protein, partial |
| Storage | The shelf life is related to many factors, storage state, buffer ingredients, storage temperature and the stability of the protein itself. Generally, the shelf life of liquid form is 6 months at -20°C/-80°C. The shelf life of lyophilized form is 12 months at -20°C/-80°C. |
| Uniprot No. | P13533 |
| Alias | Myosin heavy chain 6Myosin heavy chain, cardiac muscle alpha isoform ;MyHC-alpha |
| Product Type | Recombinant Protein |
| Immunogen Species | Homo sapiens (Human) |
| Purity | Greater than 90% as determined by SDS-PAGE. |
| Sequence | NAYQYMLTDRENQSILITGESGAGKTVNTRKRVIQYFASIAAIGDRGKKDNANAN KGTLEDQIIQANPALEAFGNAKTVRNDNSSRFGKFIRIHFGATGKLASADIETYL LEKSRVIFQLKAERNYHIFYQILSNKKPELLDMLLVTTNNPYDYAFVSQGEVSVA SIDDSEELMATDSAFDVLGFTSEEKAGVYKLTGAIMHYGNMFKQKQREEQAE PDGTEDADKSAYLMGLNSADLLKGLCHPRVKVGNEYVTKGQSVQQVYYSIGA LAKAVYEKMFNWMVTRINATLETQPRQYFIGVLDIAGFEIFDFNSFEQLCINFT NEKLQQFFNHMHMFVLEQEEYKKEGIEWTFIDFGMDLQACIDLIEKPMGIMSILE EECMFPKATDMTFKAKLYDNHLGKSNNFQKPRNIKGKQEAHFSLIHYAGTVDY NILGWLEKNKDPLNETVVALYQKSSLKLMATLFSSYATADTGDSGKSKGGKKK GSSFQTVSALHRENLNKLMTNLRTHPHFVRCIIPNERKAPGVMDNPLVMHQL RCNGVLEGIRICRKGFPNRILYGDFRQRYRILNPVAIPEGQFIDSRKGTEKLLSS LDIDHNQYKFGHTKVFFKAGLLGLLEEMRDERLSRIITRMQAQARGQLMRIEFK KIVERRDALLVI |
| Research Area | Signal Transduction |
| Source | Yeast |
| Target Names | MYH6 |
| Protein Names | Recommended name: Myosin-6 Alternative name(s): Myosin heavy chain 6 Myosin heavy chain, cardiac muscle alpha isoform Short name= MyHC-alpha |
| Expression Region | 160-816aa |
| Notes | Repeated freezing and thawing is not recommended. Store working aliquots at 4°C for up to one week. |
| Tag Info | N-terminal 6xHis-tagged |
| Mol. Weight | 76.8kDa |
| Protein Length | Partial |



Image



(Tris-Glycine gel) Discontinuous SDS-PAGE (reduced) with 5% enrichment gel and 15% separation gel.

Description

Discover our Recombinant Human MYH6 protein, a vital tool in signal transduction research. This partial Myosin-6 protein (160-816aa) is expressed using a yeast expression system, delivering a consistent and high-quality product to enhance your experimental outcomes. The N-terminal 6xHis-tagged Myosin heavy chain 6 (MyHC- α) enables seamless protein purification and detection, making it a reliable choice for your signal transduction investigations.

With a purity greater than 90% as determined by SDS-PAGE, our Recombinant Human MYH6 protein is designed to meet the high standards of today's scientific research community. Offered in both liquid and lyophilized powder forms, this meticulously crafted protein is the ideal choice for exploring the dynamic and intricate world of signal transduction, fostering your research progress and contributing to breakthrough discoveries in the field.

Reconstitution

We recommend that this vial be briefly centrifuged prior to opening to bring the contents to the bottom. Please reconstitute protein in deionized sterile water to a concentration of 0.1-1.0 mg/mL. We recommend to add 5-50% of glycerol (final concentration) and aliquot for long-term storage at $-20^{\circ}\text{C}/-80^{\circ}\text{C}$. Our default final concentration of glycerol is 50%. Customers could use it as reference.

Shelf Life

The shelf life is related to many factors, storage state, buffer ingredients, storage temperature and the stability of the protein itself. Generally, the shelf life of liquid form is 6 months at $-20^{\circ}\text{C}/-80^{\circ}\text{C}$. The shelf life of lyophilized form is 12 months at $-20^{\circ}\text{C}/-80^{\circ}\text{C}$.