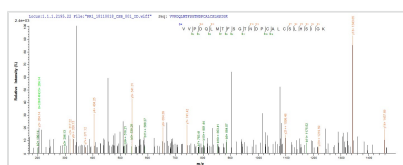




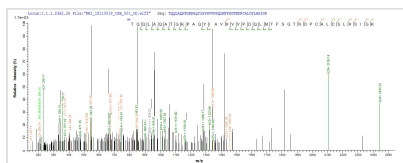
# Recombinant Mouse Macrophage migration inhibitory factor (Mif)

<b>Product Code</b>	CSB-YP013826MO
<b>Abbreviation</b>	Recombinant Mouse Mif protein
<b>Storage</b>	The shelf life is related to many factors, storage state, buffer ingredients, storage temperature and the stability of the protein itself. Generally, the shelf life of liquid form is 6 months at -20°C/-80°C. The shelf life of lyophilized form is 12 months at -20°C/-80°C.
<b>Uniprot No.</b>	P34884
<b>Storage Buffer</b>	Tris-based buffer,50% glycerol
<b>Product Type</b>	Recombinant Proteins
<b>Immunogen Species</b>	Mus musculus (Mouse)
<b>Purity</b>	Greater than 95% as determined by SDS-PAGE. Greater than 95% as determined by SEC-HPLC.
<b>Sequence</b>	PMFIVNTNVPRASVPEGFLSELTQQLAQATGKPAQYIAVHVVPDQLMTFSGTN DPCALCSLHSIGKIGGAQNRNYSKLLCGLLSDRLHISPDRVYINYYDMNAANVG WNGSTFA
<b>Research Area</b>	Immunology
<b>Source</b>	Yeast
<b>Target Names</b>	Mif
<b>Protein Names</b>	Recommended name: Macrophage migration inhibitory factor Short name= MIF EC= 5.3.2.1Alternative name(s): Delayed early response protein 6 Short name= DER6 Glycosylation-inhibiting factor Short name= GIF L-dopac
<b>Expression Region</b>	2-115aa
<b>Notes</b>	Repeated freezing and thawing is not recommended. Store working aliquots at 4°C for up to one week.
<b>Tag Info</b>	N-terminal 6xHis-tagged
<b>Mol. Weight</b>	13.9 kDa
<b>Protein Length</b>	Full Length of Mature Protein

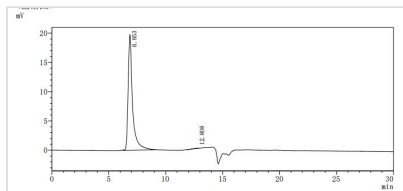
## Image



Based on the SEQUEST from database of Yeast host and target protein, the LC-MS/MS Analysis result of CSB-YP013826MO could indicate that this peptide derived from Yeast-expressed Mus musculus (Mouse) Mif.



Based on the SEQUEST from database of Yeast host and target protein, the LC-MS/MS Analysis result of CSB-YP013826MO could indicate that this peptide derived from Yeast-expressed *Mus musculus* (Mouse) Mif.



The purity of Mif was greater than 95% as determined by SEC-HPLC

## Shelf Life

The shelf life is related to many factors, storage state, buffer ingredients, storage temperature and the stability of the protein itself. Generally, the shelf life of liquid form is 6 months at -20°C/-80°C. The shelf life of lyophilized form is 12 months at -20°C/-80°C.