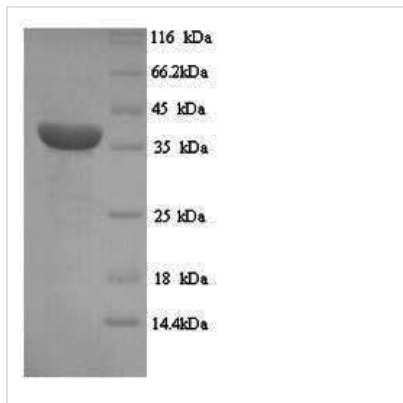


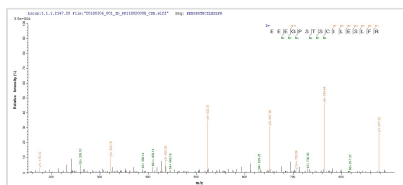


Recombinant Human Melanoma-associated antigen 1 (MAGEA1)

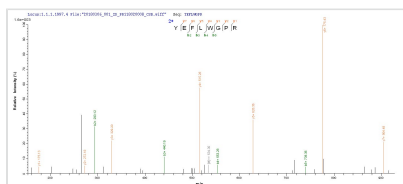
Product Code	CSB-YP013323HU
Relevance	May be involved in transcriptional regulation through interaction with SNW1 and recruiting histone deactelyase HDAC1. May inhibit notch intracellular domain (NICD) transactivation. May play a role in bryonal development and tumor transformation or aspects of tumor progression. Antigen recognized on a melanoma by autologous cytolytic T-lymphocytes.
Abbreviation	Recombinant Human MAGEA1 protein
Storage	The shelf life is related to many factors, storage state, buffer ingredients, storage temperature and the stability of the protein itself. Generally, the shelf life of liquid form is 6 months at -20°C/-80°C. The shelf life of lyophilized form is 12 months at -20°C/-80°C.
Uniprot No.	P43355
Alias	Antigen MZ2-ECancer/testis antigen 1.1 ;CT1.1MAGE-1 antigen
Product Type	Recombinant Protein
Immunogen Species	Homo sapiens (Human)
Purity	Greater than 90% as determined by SDS-PAGE.
Sequence	MSLEQRSLHCKPEEALAQQEALGLVCVQAATSSSSPLVLGTLEEVPSTAGSTD PPQSPQGASAFPTTINFTRQRQPSEGSSSREEEGPSTSCILESLFRAVITKKVA DLVGFLLLKYRAREPVTKAEMLESVIKNYKHCFPEIFGKASESLQLVFGIDVKEA DPTGHSYVLVTCLGLSYDGLLDGNQIMPKTGFLIIVLMIAMEGGHAPEEEIWE ELSVMEVYDGREHSAYGEPKLLTQDLVQEKYLEYRQVPDSDPARYEFLWGP RALAETSYVKVLEYVIKVSARVRFFFPSLREAAALREEEEGV
Research Area	Cancer
Source	Yeast
Target Names	MAGEA1
Protein Names	Recommended name: Melanoma-associated antigen 1 Alternative name(s): Antigen MZ2-E Cancer/testis antigen 1.1 Short name= CT1.1 MAGE-1 antigen
Expression Region	1-309aa
Notes	Repeated freezing and thawing is not recommended. Store working aliquots at 4°C for up to one week.
Tag Info	N-terminal 6xHis-tagged
Mol. Weight	36.3kDa
Protein Length	Full Length
Image	



(Tris-Glycine gel) Discontinuous SDS-PAGE (reduced) with 5% enrichment gel and 15% separation gel.



Based on the SEQUEST from database of Yeast host and target protein, the LC-MS/MS Analysis result of CSB-YP013323HU could indicate that this peptide derived from Yeast-expressed Homo sapiens (Human) MAGEA1.



Based on the SEQUEST from database of Yeast host and target protein, the LC-MS/MS Analysis result of CSB-YP013323HU could indicate that this peptide derived from Yeast-expressed Homo sapiens (Human) MAGEA1.

Reconstitution

We recommend that this vial be briefly centrifuged prior to opening to bring the contents to the bottom. Please reconstitute protein in deionized sterile water to a concentration of 0.1-1.0 mg/mL. We recommend to add 5-50% of glycerol (final concentration) and aliquot for long-term storage at -20°C/-80°C. Our default final concentration of glycerol is 50%. Customers could use it as reference.

Shelf Life

The shelf life is related to many factors, storage state, buffer ingredients, storage temperature and the stability of the protein itself. Generally, the shelf life of liquid form is 6 months at -20°C/-80°C. The shelf life of lyophilized form is 12 months at -20°C/-80°C.