

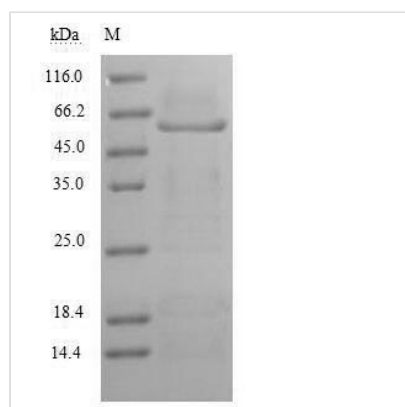


# Recombinant Human Myelin-associated glycoprotein (MAG), partial

<b>Product Code</b>	CSB-YP013322HU
<b>Relevance</b>	Adhesion molecule in postnatal neural development that mediates sialic-acid dependent cell-cell interactions between neuronal and myelinating cells. Preferentially binds to alpha-2,3-linked sialic acid .
<b>Abbreviation</b>	Recombinant Human MAG protein, partial
<b>Storage</b>	The shelf life is related to many factors, storage state, buffer ingredients, storage temperature and the stability of the protein itself. Generally, the shelf life of liquid form is 6 months at -20°C/-80°C. The shelf life of lyophilized form is 12 months at -20°C/-80°C.
<b>Uniprot No.</b>	P20916
<b>Alias</b>	Siglec-4a
<b>Product Type</b>	Recombinant Protein
<b>Immunogen Species</b>	Homo sapiens (Human)
<b>Purity</b>	Greater than 90% as determined by SDS-PAGE.
<b>Sequence</b>	GHWGAWMPSSISAFEGTCVSIPCRFDFFDELRPVVHGVWYFNSPYPKNYPP VVFKSRTQVVHESFQGRSRLGLDLRLNCTLLLSNVSPELGGKYYFRGDLGG YNQYTFSEHSVLDIVNTPNIVVPPEVVAGTEVEVSCMVPDNCPELRPELSWLG HEGLGEPVAVLGRLEDEGTWVQVSLHVFVPTREANGHRLGCQASFPNTTLQF EGYASMDVKYPPVIVEMNSSVEAIEGSHVSLLCGADSNPPPLLTWMRDGTVL REAVAESLLEEEVTPAEDGVYACLAENAYGQDNRTVGLSVMYAPWKPTVN GTMVAVEGETVSILCSTQSNPDILTIFKEKQILSTVIYESELQLELPAVSPEDDG EYWCVAENQYGQRATAFNLSVEFAPVLLLESHCAAARDTVQCLCVVKSNEP SVAFELPSRNVTNSESEREFVYSERSGLVLTSILTLRGQAQAPPRVICTARNLY GAKSLELPFQGAHRLMWAKIGP
<b>Research Area</b>	Cell Adhesion
<b>Source</b>	Yeast
<b>Target Names</b>	MAG
<b>Protein Names</b>	Recommended name: Myelin-associated glycoprotein Alternative name(s): Siglec-4a
<b>Expression Region</b>	20-516aa
<b>Notes</b>	Repeated freezing and thawing is not recommended. Store working aliquots at 4°C for up to one week.
<b>Tag Info</b>	N-terminal 6xHis-tagged
<b>Mol. Weight</b>	56.7kDa
<b>Protein Length</b>	Extracellular Domain



## Image



(Tris-Glycine gel) Discontinuous SDS-PAGE (reduced) with 5% enrichment gel and 15% separation gel.

## Reconstitution

We recommend that this vial be briefly centrifuged prior to opening to bring the contents to the bottom. Please reconstitute protein in deionized sterile water to a concentration of 0.1-1.0 mg/mL. We recommend to add 5-50% of glycerol (final concentration) and aliquot for long-term storage at -20°C/-80°C. Our default final concentration of glycerol is 50%. Customers could use it as reference.

## Shelf Life

The shelf life is related to many factors, storage state, buffer ingredients, storage temperature and the stability of the protein itself. Generally, the shelf life of liquid form is 6 months at -20°C/-80°C. The shelf life of lyophilized form is 12 months at -20°C/-80°C.