



# Recombinant Human Lysosomal acid lipase/cholesteryl ester hydrolase (LIPA)

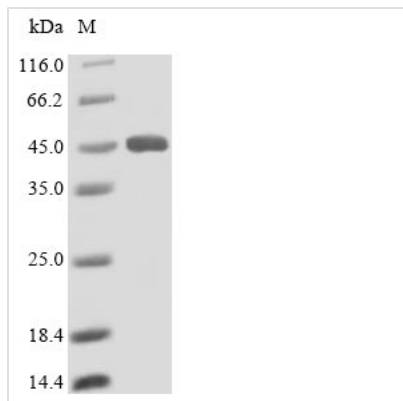
<b>Product Code</b>	CSB-YP012972HU
<b>Relevance</b>	Crucial for the intracellular hydrolysis of cholesteryl esters and triglycerides that have been internalized via receptor-mediated endocytosis of lipoprotein particles. Important in mediating the effect of LDL (low density lipoprotein) uptake on suppression of hydroxymethylglutaryl-CoA reductase and activation of endogenous cellular cholesteryl ester formation.
<b>Abbreviation</b>	Recombinant Human LIPA protein
<b>Storage</b>	The shelf life is related to many factors, storage state, buffer ingredients, storage temperature and the stability of the protein itself. Generally, the shelf life of liquid form is 6 months at -20°C/-80°C. The shelf life of lyophilized form is 12 months at -20°C/-80°C.
<b>Uniprot No.</b>	P38571
<b>Alias</b>	Cholesteryl esterase Lipase A Sterol esterase
<b>Product Type</b>	Recombinant Protein
<b>Immunogen Species</b>	Homo sapiens (Human)
<b>Purity</b>	Greater than 90% as determined by SDS-PAGE.
<b>Sequence</b>	SGGKLTAVDPETNMNVSEIISYWGFPSSEYLVETEDGYILCLNRIPHGRKNHSD KGPKPVVFLQHGLLADSSNWVTNLANSLSLGFILADAGFDVWMGNSRGNTWS RKHKTLVSQDEFWAFSYDEMAKYDLPASINFILNKTGQEQVYYVGHSQGTTI GFIAFSQIPELAKRIKMFFALGPVASVAFCTSPMAKLGRLPDHLIKDLFGDKEFL PQSAFLKWLGHVCTHVILKELCGNLCFLLCGFNERNLNMSRVDVYTTTHSPAG TSVQNMLHWSQAVKFQKFQAFDWGSSAKNYFHYNQSYPTYNVKDMLVPTA VWSSGGHDWLADVVDVNILLTQITNLV FHESIPEWEHLDFIWGLDAPWRLYNKII NLMRKYQ
<b>Research Area</b>	Cardiovascular
<b>Source</b>	Yeast
<b>Target Names</b>	LIPA
<b>Protein Names</b>	Recommended name: Lysosomal acid lipase/cholesteryl ester hydrolase Short name= Acid cholesteryl ester hydrolase Short name= LAL EC= 3.1.1.13 Alternative name(s): Cholesteryl esterase Lipase A Sterol esterase
<b>Expression Region</b>	22-399aa
<b>Notes</b>	Repeated freezing and thawing is not recommended. Store working aliquots at 4°C for up to one week.
<b>Tag Info</b>	N-terminal 6xHis-tagged
<b>Mol. Weight</b>	45.0kDa



## Protein Length

## Full Length of Mature Protein

### Image



(Tris-Glycine gel) Discontinuous SDS-PAGE (reduced) with 5% enrichment gel and 15% separation gel.

## Reconstitution

We recommend that this vial be briefly centrifuged prior to opening to bring the contents to the bottom. Please reconstitute protein in deionized sterile water to a concentration of 0.1-1.0 mg/mL. We recommend to add 5-50% of glycerol (final concentration) and aliquot for long-term storage at -20°C/-80°C. Our default final concentration of glycerol is 50%. Customers could use it as reference.

## Shelf Life

The shelf life is related to many factors, storage state, buffer ingredients, storage temperature and the stability of the protein itself. Generally, the shelf life of liquid form is 6 months at -20°C/-80°C. The shelf life of lyophilized form is 12 months at -20°C/-80°C.