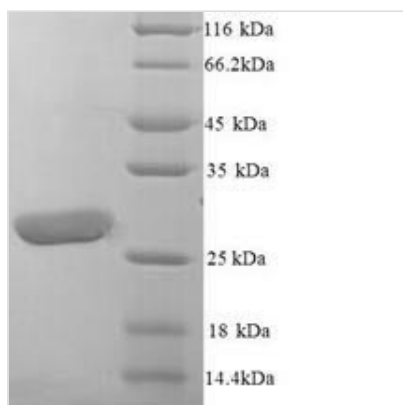




Recombinant Human Leukocyte immunoglobulin-like receptor subfamily A member 5 (LILRA5), partial

Product Code	CSB-YP012937HU
Relevance	May play a role in triggering innate immune responses. Does not se to play a role for any class I MHC antigen recognition.
Abbreviation	Recombinant Human LILRA5 protein, partial
Storage	The shelf life is related to many factors, storage state, buffer ingredients, storage temperature and the stability of the protein itself. Generally, the shelf life of liquid form is 6 months at -20°C/-80°C. The shelf life of lyophilized form is 12 months at -20°C/-80°C.
Uniprot No.	A6NI73
Alias	CD85 antigen-like family member FImmunoglobulin-like transcript 11 ;ILT-11Leukocyte immunoglobulin-like receptor 9 ;LIR-9; CD85f
Product Type	Recombinant Protein
Immunogen Species	Homo sapiens (Human)
Purity	Greater than 90% as determined by SDS-PAGE.
Sequence	GNLSKATLWAEPGSVISRGNSVTIRCQGTLEAQEYRLVKEGSPEPWDTQNPL EPKNKARFSIPSMTEHHAGRYRCYYYSPAGWSEPSDPLELVVTGFYNKPTLS ALPSPVVTSGENVTLQCGSRLRFDRFILTEEGDHKLSWTLDSQLTPSGQFQAL FPVGPVTPSHRWMLRCYGSRRHILQVWSEPSDLLEIPVSGAADNLSPSQNKS DSGTASHLQDYAVENLIR
Research Area	Immunology
Source	Yeast
Target Names	LILRA5
Protein Names	Recommended name: Leukocyte immunoglobulin-like receptor subfamily A member 5 Alternative name(s): CD85 antigen-like family member F Immunoglobulin-like transcript 11 Short name= ILT-11 Leukocyte immunoglobulin-like receptor 9 S
Expression Region	42-268aa
Notes	Repeated freezing and thawing is not recommended. Store working aliquots at 4°C for up to one week.
Tag Info	N-terminal 6xHis-tagged
Mol. Weight	27.2kDa
Protein Length	Extracellular Domain
Image	



(Tris-Glycine gel) Discontinuous SDS-PAGE (reduced) with 5% enrichment gel and 15% separation gel.

Reconstitution

We recommend that this vial be briefly centrifuged prior to opening to bring the contents to the bottom. Please reconstitute protein in deionized sterile water to a concentration of 0.1-1.0 mg/mL. We recommend to add 5-50% of glycerol (final concentration) and aliquot for long-term storage at -20°C/-80°C. Our default final concentration of glycerol is 50%. Customers could use it as reference.

Shelf Life

The shelf life is related to many factors, storage state, buffer ingredients, storage temperature and the stability of the protein itself. Generally, the shelf life of liquid form is 6 months at -20°C/-80°C. The shelf life of lyophilized form is 12 months at -20°C/-80°C.