

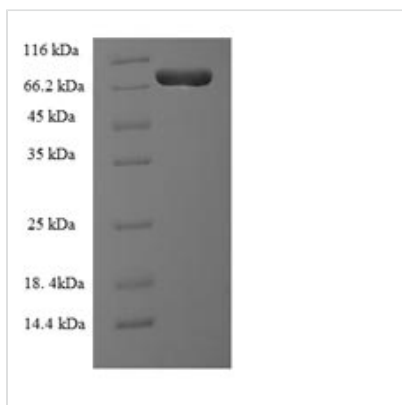


Recombinant Human Plastin-2 (LCP1)

Product Code	CSB-YP012824HU
Relevance	Actin-binding protein. Plays a role in the activation of T-cells in response to costimulation through TCR/CD3 and CD2 or CD28. Modulates the cell surface expression of IL2RA/CD25 and CD69.
Abbreviation	Recombinant Human LCP1 protein
Storage	The shelf life is related to many factors, storage state, buffer ingredients, storage temperature and the stability of the protein itself. Generally, the shelf life of liquid form is 6 months at -20°C/-80°C. The shelf life of lyophilized form is 12 months at -20°C/-80°C.
Uniprot No.	P13796
Alias	L-plastin;LC64PLymphocyte cytosolic protein 1 ;LCP-1
Product Type	Recombinant Protein
Immunogen Species	Homo sapiens (Human)
Purity	Greater than 90% as determined by SDS-PAGE.
Sequence	<p> ARGSVSDEEMMELREAFKVDTDGNGYISFNELNDLFKAACLPLPGYRVREIT ENLMATGDLDDQDGRISFDEFIKIFHGLKSTDVAKTFRKAINKKEGICAIGGTSEQ SSVGTQHSYSEEEKYAFVNWINKALENDPDCRHVPMNPNTNDLFINAVGDGIV LCKMINLSVPDTIDERTINKKKLTPTFTIQENLNLALNSASAIGCHVVNIGAEDLKE GKPYLVGLLWQVIKIGLFADIELSRNEALIALLLREGESLEDLMKLSPEELLRW ANYHLENAGCNKIGNFSTDIKDSKAYYHLLQVAPKGDEEGVPAVVIDMSGLR EKDDIQRAECMLQQAERLGCRQFVTATDVVRGNPKLNLAFLANLFNRYPALHK PENQDIDWGALEGETREERTFRNWMNSLGVNPRVNHLYSDLSDALVIFQLYE KIKVPVDWNRVKNPPYPKLGGMKKLENCNYAVELGKNQAKFSLVGIGGQDL NEGNRTLTLALIWQLMRRYTLNILEEIGGGQKVNDIIVNWVNETLREAKKSSSI SSFKDPKISTSLPVLDLIDAIQPGSINYDLLKTENLNDDEKLNNAKYAISMARKIG ARVYALPEDLVEVNPKMVMVTVFACLMGKGMKRV </p>
Research Area	Cancer
Source	Yeast
Target Names	LCP1
Protein Names	Recommended name: Plastin-2 Alternative name(s): L-plastin LC64P Lymphocyte cytosolic protein 1 Short name= LCP-1
Expression Region	2-627aa
Notes	Repeated freezing and thawing is not recommended. Store working aliquots at 4°C for up to one week.
Tag Info	N-terminal 6xHis-tagged
Mol. Weight	72.2kDa
Protein Length	Full Length of Mature Protein



Image



(Tris-Glycine gel) Discontinuous SDS-PAGE (reduced) with 5% enrichment gel and 15% separation gel.

Reconstitution

We recommend that this vial be briefly centrifuged prior to opening to bring the contents to the bottom. Please reconstitute protein in deionized sterile water to a concentration of 0.1-1.0 mg/mL. We recommend to add 5-50% of glycerol (final concentration) and aliquot for long-term storage at -20°C/-80°C. Our default final concentration of glycerol is 50%. Customers could use it as reference.

Shelf Life

The shelf life is related to many factors, storage state, buffer ingredients, storage temperature and the stability of the protein itself. Generally, the shelf life of liquid form is 6 months at -20°C/-80°C. The shelf life of lyophilized form is 12 months at -20°C/-80°C.