

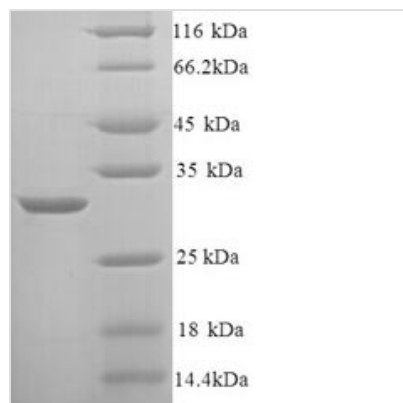


# Recombinant Rat Kininogen-1 (Kng1), partial

<b>Product Code</b>	CSB-YP012479RA
<b>Relevance</b>	1 Kininogens are inhibitors of thiol proteases; (2) HMW-kininogen plays an important role in blood coagulation by helping to position optimally prekallikrein and factor XI next to factor XII; (3) HMW-kininogen inhibits the thrombin- and plasmin-induced aggregation of thrombocytes; (4) the active peptide bradykinin that is released from HMW-kininogen shows a variety of physiological effects: (4A) influence in smooth muscle contraction, (4B) induction of hypotension, (4C) natriuresis and diuresis, (4D) decrease in blood glucose level, (4E) it is a mediator of inflammation and causes (4E1) increase in vascular permeability, (4E2) stimulation of nociceptors (4E3) release of other mediators of inflammation (e.g. prostaglandins), (4F) it has a cardioprotective effect (directly via bradykinin action, indirectly via endothelium-derived relaxing factor action); (5) LMW-kininogen inhibits the aggregation of thrombocytes; (6) LMW-kininogen is in contrast to HMW-kininogen not involved in blood clotting.
<b>Abbreviation</b>	Recombinant Rat Kng1 protein, partial
<b>Storage</b>	The shelf life is related to many factors, storage state, buffer ingredients, storage temperature and the stability of the protein itself. Generally, the shelf life of liquid form is 6 months at -20°C/-80°C. The shelf life of lyophilized form is 12 months at -20°C/-80°C.
<b>Uniprot No.</b>	P08934
<b>Product Type</b>	Recombinant Protein
<b>Immunogen Species</b>	Rattus norvegicus (Rat)
<b>Purity</b>	Greater than 90% as determined by SDS-PAGE.
<b>Sequence</b>	APRVKKPKESTTVSPSYIARVQEERDPGNEQGPIHGHGWLHAKQIKNKNHQG HKHGHGIGHGHQKPHGLGHGHQLKDDLKQQREDGYDHRHPVGHGHGQQRH GHGHGHGHGRDKHTNKDKNNVKHTDQRRAPLTSSSEDNTTSTQIQGRTEGF TLNPPLAQPAVISRGFQDSGFTEGVATTSPYDTETHDDLIPDIHVQPDSLSFKLI SDFPEATSHKCPGRPWPVSRKDPTIETTEFSDFDLLDALS
<b>Research Area</b>	Others
<b>Source</b>	Yeast
<b>Target Names</b>	Kng1
<b>Protein Names</b>	Recommended name: Kininogen-1 Cleaved into the following 3 chains: 1. Kininogen-1 heavy chain 2. Bradykinin 3. Kininogen-1 light chain
<b>Expression Region</b>	390-639aa
<b>Notes</b>	Repeated freezing and thawing is not recommended. Store working aliquots at 4°C for up to one week.
<b>Tag Info</b>	N-terminal 6xHis-tagged
<b>Mol. Weight</b>	29.8kDa


**Protein Length**

Partial

**Image**


(Tris-Glycine gel) Discontinuous SDS-PAGE (reduced) with 5% enrichment gel and 15% separation gel.

**Reconstitution**

We recommend that this vial be briefly centrifuged prior to opening to bring the contents to the bottom. Please reconstitute protein in deionized sterile water to a concentration of 0.1-1.0 mg/mL. We recommend to add 5-50% of glycerol (final concentration) and aliquot for long-term storage at -20°C/-80°C. Our default final concentration of glycerol is 50%. Customers could use it as reference.

**Shelf Life**

The shelf life is related to many factors, storage state, buffer ingredients, storage temperature and the stability of the protein itself. Generally, the shelf life of liquid form is 6 months at -20°C/-80°C. The shelf life of lyophilized form is 12 months at -20°C/-80°C.