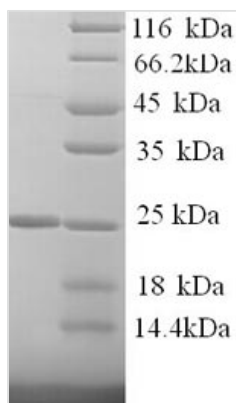




Recombinant Human Kallikrein-7 (KLK7), partial

Product Code	CSB-YP012458HU
Relevance	May catalyze the degradation of intercellular cohesive structures in the cornified layer of the skin in the continuous shedding of cells from the skin surface. Specific for amino acid residues with aromatic side chains in the P1 position. Cleaves insulin A chain at '14-Tyr- -Gln-15' and insulin B chain at '6-Leu- -Cys-7', '16-Tyr- -Leu-17', '25-Phe- -Tyr-26' and '26-Tyr- -Thr-27'. Could play a role in the activation of precursors to inflammatory cytokines.
Abbreviation	Recombinant Human KLK7 protein, partial
Storage	The shelf life is related to many factors, storage state, buffer ingredients, storage temperature and the stability of the protein itself. Generally, the shelf life of liquid form is 6 months at -20°C/-80°C. The shelf life of lyophilized form is 12 months at -20°C/-80°C.
Uniprot No.	P49862
Alias	Serine protease 6 Stratum corneum chymotryptic enzyme ;hSCCE
Product Type	Recombinant Protein
Immunogen Species	Homo sapiens (Human)
Purity	Greater than 90% as determined by SDS-PAGE.
Sequence	DKIIDGAPCARGSHPWQVALLSGNQLHCGGVLVNERWVLTAAHCKMNEYTVH LGSDTLGDRRAQRIKASKSFRHPGYSTQTHVNDLMLVKLNSQARLSSMVKKV RLPSRCEPPGTTCTVSGWGTSTTSPDVTFPSDLMCVDVKLISPQDCTKVYKDLL ENSMLCAGIPDSKKNACNGDSGGPLVCRGTLQGLVSWGTFFCGQPNDPGVY TQVCKFTKWINDTMKKHR
Research Area	Cancer
Source	Yeast
Target Names	KLK7
Protein Names	Recommended name: Kallikrein-7 Short name= hK7 EC= 3.4.21.117 Alternative name(s): Serine protease 6 Stratum corneum chymotryptic enzyme Short name= hSCCE
Expression Region	28-253aa
Notes	Repeated freezing and thawing is not recommended. Store working aliquots at 4°C for up to one week.
Tag Info	N-terminal 6xHis-tagged
Mol. Weight	26.7kDa
Protein Length	Partial
Image	



(Tris-Glycine gel) Discontinuous SDS-PAGE (reduced) with 5% enrichment gel and 15% separation gel.

Reconstitution

We recommend that this vial be briefly centrifuged prior to opening to bring the contents to the bottom. Please reconstitute protein in deionized sterile water to a concentration of 0.1-1.0 mg/mL. We recommend to add 5-50% of glycerol (final concentration) and aliquot for long-term storage at -20°C/-80°C. Our default final concentration of glycerol is 50%. Customers could use it as reference.

Shelf Life

The shelf life is related to many factors, storage state, buffer ingredients, storage temperature and the stability of the protein itself. Generally, the shelf life of liquid form is 6 months at -20°C/-80°C. The shelf life of lyophilized form is 12 months at -20°C/-80°C.