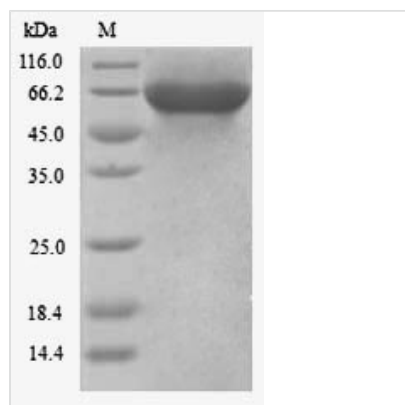




# Recombinant Human Kinesin light chain 3 (KLC3)

<b>Product Code</b>	CSB-YP012381HU
<b>Relevance</b>	Kinesin is a microtubule-associated force-producing protein that may play a role in organelle transport.
<b>Abbreviation</b>	Recombinant Human KLC3 protein
<b>Storage</b>	The shelf life is related to many factors, storage state, buffer ingredients, storage temperature and the stability of the protein itself. Generally, the shelf life of liquid form is 6 months at -20°C/-80°C. The shelf life of lyophilized form is 12 months at -20°C/-80°C.
<b>Uniprot No.</b>	Q6P597
<b>Alias</b>	KLC2-like kinesin light chain 2
<b>Product Type</b>	Recombinant Protein
<b>Immunogen Species</b>	Homo sapiens (Human)
<b>Purity</b>	Greater than 90% as determined by SDS-PAGE.
<b>Sequence</b>	MSVQVAAPGSAGLGPERLSPEELVRQTRQVVQGLEALRAEHHGLAGHLAEAL AGQGPAAGLEMLEEKQQVVSLSLEAIELGLGEAQVLLALSAHVGALEAEKQRL RSQARRLAQENVWLREELEETQRRRLRASEESVAQLEEEKRHLEFLGQLRQYD PPAESQQSESPPRRDSLASFPSSEEEERKGPEAAGAAAAQQGGYEIPARLRT LHNLVIQYAGQGGRYEVAVPLCRQALEDLERSSSGHCHPDVATMLNILALVYRDQ NKYKEATDLLHDALQIREQTLGPEHPAVAATLNNLAVLYGKRGYREAEPLCQ RALEIREKVLGADHPDVAKQLNNLALLCQNQGKFEDVERHYARALSIYEALGG PHDPNVAKTKNNLASAYLKQNKYQQAEEELYKEILHKEDLPAPLGAPNTGTAGD AEQALRRSSSLSKIRESIRRGSEKLVSRRLRGEAAAGAAGMKRAMSLNTLNVD PRAPGTQFPSWHLDKAPRTLSASTQDLSPH
<b>Research Area</b>	Signal Transduction
<b>Source</b>	Yeast
<b>Target Names</b>	KLC3
<b>Protein Names</b>	Recommended name: Kinesin light chain 3 Alternative name(s): KLC2-like kinesin light chain 2
<b>Expression Region</b>	1-504aa
<b>Notes</b>	Repeated freezing and thawing is not recommended. Store working aliquots at 4°C for up to one week.
<b>Tag Info</b>	N-terminal 6xHis-tagged
<b>Mol. Weight</b>	57.4kDa
<b>Protein Length</b>	Full Length
<b>Image</b>	



(Tris-Glycine gel) Discontinuous SDS-PAGE (reduced) with 5% enrichment gel and 15% separation gel.

### Reconstitution

We recommend that this vial be briefly centrifuged prior to opening to bring the contents to the bottom. Please reconstitute protein in deionized sterile water to a concentration of 0.1-1.0 mg/mL. We recommend to add 5-50% of glycerol (final concentration) and aliquot for long-term storage at -20°C/-80°C. Our default final concentration of glycerol is 50%. Customers could use it as reference.

### Shelf Life

The shelf life is related to many factors, storage state, buffer ingredients, storage temperature and the stability of the protein itself. Generally, the shelf life of liquid form is 6 months at -20°C/-80°C. The shelf life of lyophilized form is 12 months at -20°C/-80°C.