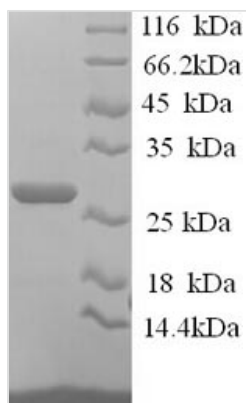




Recombinant Human Junctional adhesion molecule B (JAM2), partial

Product Code	CSB-YP011936HU
Relevance	May play a role in the processes of lymphocyte homing to secondary lymphoid organs.
Abbreviation	Recombinant Human JAM2 protein, partial
Storage	The shelf life is related to many factors, storage state, buffer ingredients, storage temperature and the stability of the protein itself. Generally, the shelf life of liquid form is 6 months at -20°C/-80°C. The shelf life of lyophilized form is 12 months at -20°C/-80°C.
Uniprot No.	P57087
Alias	Junctional adhesion molecule 2 ;JAM-2Vascular endothelial junction-associated molecule ;VE-JAM; CD322
Product Type	Recombinant Protein
Immunogen Species	Homo sapiens (Human)
Purity	Greater than 90% as determined by SDS-PAGE.
Sequence	FSAPKDQQVVTAVEYQEAILACKTPKKTVSSRLEWKKLGRSVSFVYYQQTLLQG DFKNRAEMIDFNIRIKNVTRSDAGKYRCEVSAPSEQGQNLEEDTVTLEVLVAPA VPSCEVPSSALSGTVVELRCQDKEGNPAPEYTWFKDGIRLLENPRLGSQSTN SSYTMNTKTGTLQFNTVSKLDTGEYSCEARNSVGYYRRCPGKRMQVDDLNIS
Research Area	Cardiovascular
Source	Yeast
Target Names	JAM2
Protein Names	Recommended name: Junctional adhesion molecule B Short name= JAM-B Alternative name(s): Junctional adhesion molecule 2 Short name= JAM-2 Vascular endothelial junction-associated molecule Short name= VE-JAM CD_antigen=
Expression Region	29-238aa
Notes	Repeated freezing and thawing is not recommended. Store working aliquots at 4°C for up to one week.
Tag Info	N-terminal 6xHis-tagged
Mol. Weight	25.5kDa
Protein Length	Extracellular Domain
Image	



(Tris-Glycine gel) Discontinuous SDS-PAGE (reduced) with 5% enrichment gel and 15% separation gel.

Reconstitution

We recommend that this vial be briefly centrifuged prior to opening to bring the contents to the bottom. Please reconstitute protein in deionized sterile water to a concentration of 0.1-1.0 mg/mL. We recommend to add 5-50% of glycerol (final concentration) and aliquot for long-term storage at -20°C/-80°C. Our default final concentration of glycerol is 50%. Customers could use it as reference.

Shelf Life

The shelf life is related to many factors, storage state, buffer ingredients, storage temperature and the stability of the protein itself. Generally, the shelf life of liquid form is 6 months at -20°C/-80°C. The shelf life of lyophilized form is 12 months at -20°C/-80°C.