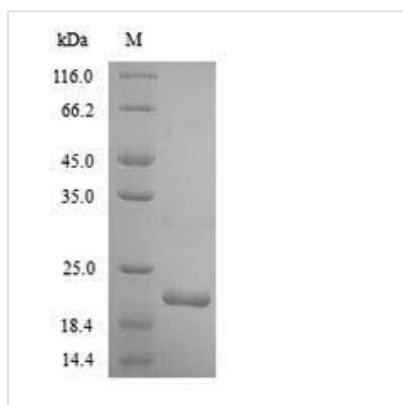




# Recombinant Human Integrin alpha-2 (ITGA2), partial

<b>Product Code</b>	CSB-YP011864HU
<b>Relevance</b>	Integrin alpha-2/beta-1 is a receptor for laminin, collagen, collagen C-propeptides, fibronectin and E-cadherin. It recognizes the proline-hydroxylated sequence G-F-P-G-E-R in collagen. It is responsible for adhesion of platelets and other cells to collagens, modulation of collagen and collagenase gene expression, force generation and organization of newly synthesized Extracellular domain matrix.
<b>Abbreviation</b>	Recombinant Human ITGA2 protein, partial
<b>Storage</b>	The shelf life is related to many factors, storage state, buffer ingredients, storage temperature and the stability of the protein itself. Generally, the shelf life of liquid form is 6 months at -20°C/-80°C. The shelf life of lyophilized form is 12 months at -20°C/-80°C.
<b>Uniprot No.</b>	P17301
<b>Alias</b>	CD49 antigen-like family member B Collagen receptor Platelet membrane glycoprotein Ia Short name: GPIa VLA-2 subunit alpha CD_antigen: CD49b
<b>Product Type</b>	Recombinant Protein
<b>Immunogen Species</b>	Homo sapiens (Human)
<b>Purity</b>	Greater than 90% as determined by SDS-PAGE.
<b>Sequence</b>	WDAVKNFLEKFVQGLDIGPTKTQVGLIQYANNPRVVFNLNTYKTKEEMIVATS QTSQYGGDLTNTFGAIQYARKYAYSASGGRRSATKVMVVVTDGESHGSM LKAVIDQCNHDNLRFGIAVLGYLNRNALDTKNLIKEIKAIASIPTEYFFNVSDEA ALLEKAGTLGEQIFSIE
<b>Research Area</b>	Signal Transduction
<b>Source</b>	Yeast
<b>Target Names</b>	ITGA2
<b>Protein Names</b>	Recommended name: Integrin alpha-2 Alternative name(s): CD49 antigen-like family member B Collagen receptor Platelet membrane glycoprotein Ia Short name= GPIa VLA-2 subunit alpha CD_antigen= CD49b
<b>Expression Region</b>	188-365aa
<b>Notes</b>	Repeated freezing and thawing is not recommended. Store working aliquots at 4°C for up to one week.
<b>Tag Info</b>	N-terminal 6xHis-tagged
<b>Mol. Weight</b>	21.6kDa
<b>Protein Length</b>	Partial
<b>Image</b>	



(Tris-Glycine gel) Discontinuous SDS-PAGE (reduced) with 5% enrichment gel and 15% separation gel.

### Reconstitution

We recommend that this vial be briefly centrifuged prior to opening to bring the contents to the bottom. Please reconstitute protein in deionized sterile water to a concentration of 0.1-1.0 mg/mL. We recommend to add 5-50% of glycerol (final concentration) and aliquot for long-term storage at -20°C/-80°C. Our default final concentration of glycerol is 50%. Customers could use it as reference.

### Shelf Life

The shelf life is related to many factors, storage state, buffer ingredients, storage temperature and the stability of the protein itself. Generally, the shelf life of liquid form is 6 months at -20°C/-80°C. The shelf life of lyophilized form is 12 months at -20°C/-80°C.