



# Recombinant Sheep Interleukin-12 subunit beta (IL12B)

<b>Product Code</b>	CSB-YP011587SH
<b>Relevance</b>	Cytokine that can act as a growth factor for activated T and NK cells, enhance the lytic activity of NK/lymphokine-activated killer cells, and stimulate the production of IFN-gamma by resting PBMC. Associates with IL23A to form the IL-23 interleukin, a heterodimeric cytokine which functions in innate and adaptive immunity. IL-23 may constitute with IL-17 an acute response to infection in peripheral tissues. IL-23 binds to a heterodimeric receptor complex composed of IL12RB1 and IL23R, activates the Jak-Stat signaling cascade, stimulates more rather than naive T-cells and promotes production of proinflammatory cytokines. IL-23 induces autoimmune inflammation and thus may be responsible for autoimmune inflammatory diseases and may be important for tumorigenesis .
<b>Abbreviation</b>	Recombinant Sheep IL12B protein
<b>Storage</b>	The shelf life is related to many factors, storage state, buffer ingredients, storage temperature and the stability of the protein itself. Generally, the shelf life of liquid form is 6 months at -20°C/-80°C. The shelf life of lyophilized form is 12 months at -20°C/-80°C.
<b>Uniprot No.</b>	P68220
<b>Alias</b>	Cytotoxic lymphocyte maturation factor 40 kDa subunit ;CLMF p40IL-12 subunit p40
<b>Product Type</b>	Recombinant Protein
<b>Immunogen Species</b>	Ovis aries (Sheep)
<b>Purity</b>	Greater than 90% as determined by SDS-PAGE.
<b>Sequence</b>	IWELEKNVYVVELDWYPNAPGETVVLTCDTPEEDGITWTSDQSSEVLGSGKTL TIQVKEFGDAGQYTCHKGGEVLSRSLLLHHKKEDGIWSTDILKDQKEPKAKSFL KCEAKDYSGHFTCSWLTAISTNLKFSVKSSRGSSDPRGVTGGAASLSAEKVS MDHREYNKYTVECQEGSACPAAEESLPIEVVMEAVHKLKYENYTSSFFIRDIK PDPPKNLQLRPLKNSRQVEVSWEYPDTWSTPHSYFSLTFCVQVQGKNKREK KLFTDQTSKVTCHKDANIRVQARDRYSSFWSEWASVSCS
<b>Research Area</b>	Others
<b>Source</b>	Yeast
<b>Target Names</b>	IL12B
<b>Protein Names</b>	Recommended name: Interleukin-12 subunit beta Short name= IL-12B Alternative name(s): Cytotoxic lymphocyte maturation factor 40 kDa subunit Short name= CLMF p40 IL-12 subunit p40
<b>Expression Region</b>	23-327aa
<b>Notes</b>	Repeated freezing and thawing is not recommended. Store working aliquots at



4°C for up to one week.

**Tag Info**

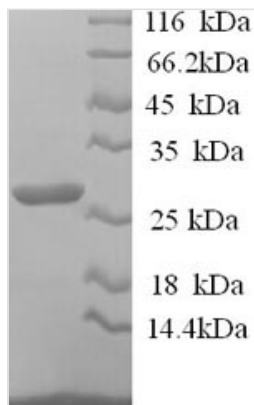
N-terminal 6xHis-tagged

**Mol. Weight**

36.5kDa

**Protein Length**

Full Length of Mature Protein

**Image**


(Tris-Glycine gel) Discontinuous SDS-PAGE (reduced) with 5% enrichment gel and 15% separation gel.

**Reconstitution**

We recommend that this vial be briefly centrifuged prior to opening to bring the contents to the bottom. Please reconstitute protein in deionized sterile water to a concentration of 0.1-1.0 mg/mL. We recommend to add 5-50% of glycerol (final concentration) and aliquot for long-term storage at -20°C/-80°C. Our default final concentration of glycerol is 50%. Customers could use it as reference.

**Shelf Life**

The shelf life is related to many factors, storage state, buffer ingredients, storage temperature and the stability of the protein itself. Generally, the shelf life of liquid form is 6 months at -20°C/-80°C. The shelf life of lyophilized form is 12 months at -20°C/-80°C.