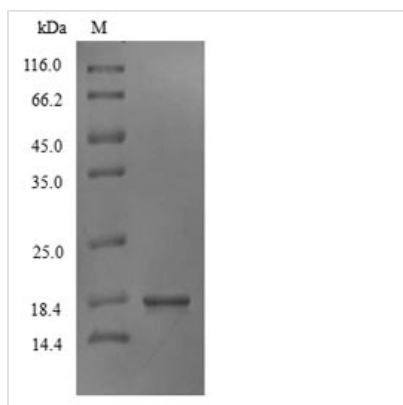


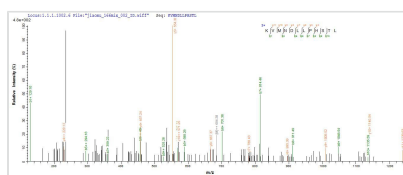


Recombinant Marmota monax Interferon gamma (IFNG)

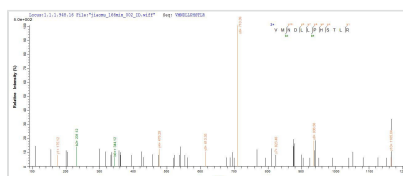
Product Code	CSB-YP011050MQG
Relevance	Produced by lymphocytes activated by specific antigens or mitogens. IFN-gamma, in addition to having antiviral activity, has important immunoregulatory functions. It is a potent activator of macrophages, it has antiproliferative effects on transformed cells and it can potentiate the antiviral and antitumor effects of the type I interferons.
Abbreviation	Recombinant Marmota monax IFNG protein
Storage	The shelf life is related to many factors, storage state, buffer ingredients, storage temperature and the stability of the protein itself. Generally, the shelf life of liquid form is 6 months at -20°C/-80°C. The shelf life of lyophilized form is 12 months at -20°C/-80°C.
Uniprot No.	O35735
Alias	Short name: IFN-gamma
Product Type	Recombinant Protein
Immunogen Species	Marmota monax (Woodchuck)
Purity	Greater than 90% as determined by SDS-PAGE.
Sequence	QDTVNKEIEDLKGYNASNSNVSDGGSLFLDILDKWKEESDKKVIQSQIVSFYF KLFEHLKDNKIIQRSMDTIKGD LFAKFFNSSTNKLQDFLKVSQVQVNDLKIQRKA VSELKKVMNDLLPHSTLRKRKRSQSSIRGRRASK
Research Area	Stem Cells
Source	Yeast
Target Names	IFNG
Protein Names	Recommended name: Interferon gamma Short name= IFN-gamma
Expression Region	24-166aa
Notes	Repeated freezing and thawing is not recommended. Store working aliquots at 4°C for up to one week.
Tag Info	N-terminal 6xHis-tagged
Mol. Weight	18.6kDa
Protein Length	Full Length of Mature Protein
Image	



(Tris-Glycine gel) Discontinuous SDS-PAGE (reduced) with 5% enrichment gel and 15% separation gel.



Based on the SEQUEST from database of Yeast host and target protein, the LC-MS/MS Analysis result of CSB-YP011050MQG could indicate that this peptide derived from Yeast-expressed *Marmota monax* (Woodchuck) IFNG.



Based on the SEQUEST from database of Yeast host and target protein, the LC-MS/MS Analysis result of CSB-YP011050MQG could indicate that this peptide derived from Yeast-expressed *Marmota monax* (Woodchuck) IFNG.

Reconstitution

We recommend that this vial be briefly centrifuged prior to opening to bring the contents to the bottom. Please reconstitute protein in deionized sterile water to a concentration of 0.1-1.0 mg/mL. We recommend to add 5-50% of glycerol (final concentration) and aliquot for long-term storage at -20°C/-80°C. Our default final concentration of glycerol is 50%. Customers could use it as reference.

Shelf Life

The shelf life is related to many factors, storage state, buffer ingredients, storage temperature and the stability of the protein itself. Generally, the shelf life of liquid form is 6 months at -20°C/-80°C. The shelf life of lyophilized form is 12 months at -20°C/-80°C.