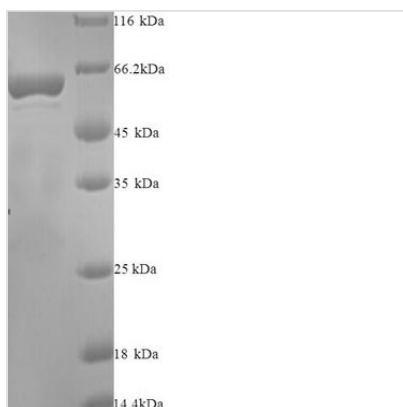




Recombinant Human Indoleamine 2,3-dioxygenase 2 (IDO2)

Product Code	CSB-YP010997HU
Relevance	Catalyzes the first and rate-limiting step in the kynurenine pathway of tryptophan catabolism.
Abbreviation	Recombinant Human IDO2 protein
Storage	The shelf life is related to many factors, storage state, buffer ingredients, storage temperature and the stability of the protein itself. Generally, the shelf life of liquid form is 6 months at -20°C/-80°C. The shelf life of lyophilized form is 12 months at -20°C/-80°C.
Uniprot No.	Q6ZQW0
Product Type	Recombinant Proteins
Immunogen Species	Homo sapiens (Human)
Purity	Greater than 90% as determined by SDS-PAGE.
Sequence	MEPHRPNVKTAVPLSLESYHISEEYGFLLPDSLKELPDHYRPWMEIANKLPLQLI DAHQLQAHVDKMPLLSCQFLKGHREQRLAHLVLSFLTMGYVWQEGEAQPAE VLPRNLALPFVEVSRNLGLPPILVHSDLVLTNWTKKDPDGFLEIGNLETIISFPG GESLHGFILVTALVEKEAVPGIKALVQATNAILQPNQEALLQALQRLRLSIQDITK TLGQMHDYVDPDIFYAGIRIFLSGWKDNPAMPAGLMYEGVSQEPLKYSGGSA AQSTVLHAFDEFLGIRHSKESGDFLYRMRDYMPPSHKAFIEDIHSAPSLRDYIL SSGQDHLLTAYNQCVQALAE LRSYHITMVT KYLITAAAKAKH GKPNHLP GPPQ ALKDRGTGGTAVMSFLKSVRDKTLESILHPRG
Source	Yeast
Target Names	IDO2
Protein Names	Recommended name: Indoleamine 2,3-dioxygenase 2 Short name= IDO-2 EC= 1.13.11.-Alternative name(s): Indoleamine 2,3-dioxygenase-like protein 1 Indoleamine-pyrrole 2,3-dioxygenase-like protein 1
Expression Region	1-407aa
Notes	Repeated freezing and thawing is not recommended. Store working aliquots at 4°C for up to one week.
Tag Info	N-terminal 6xHis-tagged
Mol. Weight	50.4kDa
Protein Length	Full Length
Image	



(Tris-Glycine gel) Discontinuous SDS-PAGE (reduced) with 5% enrichment gel and 15% separation gel.

Description

The expression of recombinant Human IDO2 protein in Yeast cells requires incorporating a DNA fragment encoding the Human IDO2 protein (14-420aa) into a plasmid vector and transforming this vector into Yeast cells. Positive cells are screened, cultured, and induced to produce the IDO2 protein. A N-terminal 6xHis tag is attached to the protein. The recombinant Human IDO2 protein is collected and purified from the cell lysate through affinity purification. It is assessed through SDS-PAGE and subsequent staining of the gel with Coomassie Brilliant Blue, with a purity of exceeding 90%.

Shelf Life

The shelf life is related to many factors, storage state, buffer ingredients, storage temperature and the stability of the protein itself. Generally, the shelf life of liquid form is 6 months at -20°C/-80°C. The shelf life of lyophilized form is 12 months at -20°C/-80°C.