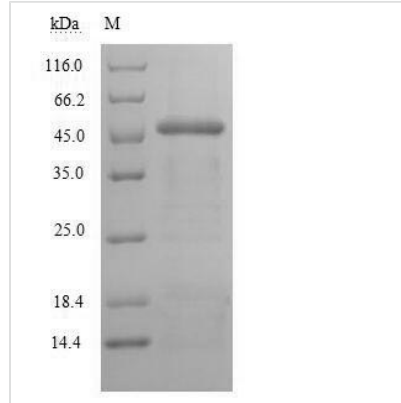


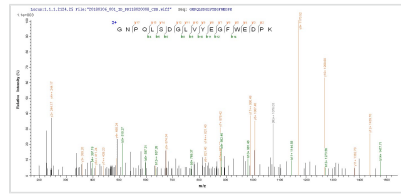


Recombinant Human Indoleamine 2,3-dioxygenase 1 (IDO1)

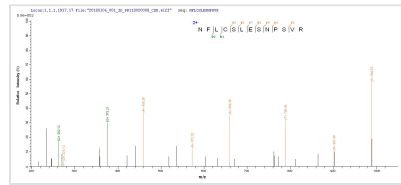
Product Code	CSB-YP010996HU
Relevance	Catalyzes the cleavage of the pyrrol ring of tryptophan and incorporates both atoms of a molecule of oxygen.
Abbreviation	Recombinant Human IDO1 protein
Storage	The shelf life is related to many factors, storage state, buffer ingredients, storage temperature and the stability of the protein itself. Generally, the shelf life of liquid form is 6 months at -20°C/-80°C. The shelf life of lyophilized form is 12 months at -20°C/-80°C.
Uniprot No.	P14902
Alias	Indoleamine-pyrrole 2,3-dioxygenase
Product Type	Recombinant Protein
Immunogen Species	Homo sapiens (Human)
Purity	Greater than 90% as determined by SDS-PAGE.
Sequence	MAHAMENSWTISKEYHIDEEVGFALPNPQENLPDFYNDWMFIAKHLPDLIESG QLRERVEKLNMLSIDHLTDHKSQRLARLVLGCITMAYVWVGKGHGDVVRKVLPR NIAVPYCQLSKKLELPPILVYADCVLANWKKKDPNKPLTYENMDVLFSDRDGD CSKGFLLVLLVEIAAASAIVKVIPTVFKAMQMQRDTELLKALLEIASCLEKALQVF HQIHDHVNPKAFFSVLRIYLSGWKGNPQLSDGLVYEGFWEDPKEFAGGSAGQ SSVFQCFDVLGIIQQTAGGGHAAQFLQDMRRYMPPAHRNFLCSLESNPSVRE FVLSKGDAGLREAYDACVKALVSLRSYHLQIVTKYILIPASQQPKENKTSEDPS KLEAKGTGGTDLMNFKTVRSTTEKSLLKEG
Research Area	Cardiovascular
Source	Yeast
Target Names	IDO1
Protein Names	Recommended name: Indoleamine 2,3-dioxygenase 1 Short name= IDO-1 EC= 1.13.11.52 Alternative name(s): Indoleamine-pyrrole 2,3-dioxygenase
Expression Region	1-403aa
Notes	Repeated freezing and thawing is not recommended. Store working aliquots at 4°C for up to one week.
Tag Info	N-terminal 6xHis-tagged
Mol. Weight	47.3kDa
Protein Length	Full Length
Image	



(Tris-Glycine gel) Discontinuous SDS-PAGE (reduced) with 5% enrichment gel and 15% separation gel.



Based on the SEQUEST from database of Yeast host and target protein, the LC-MS/MS Analysis result of CSB-YP010996HU could indicate that this peptide derived from Yeast-expressed Homo sapiens (Human) IDO1.



Based on the SEQUEST from database of Yeast host and target protein, the LC-MS/MS Analysis result of CSB-YP010996HU could indicate that this peptide derived from Yeast-expressed Homo sapiens (Human) IDO1.

Reconstitution

We recommend that this vial be briefly centrifuged prior to opening to bring the contents to the bottom. Please reconstitute protein in deionized sterile water to a concentration of 0.1-1.0 mg/mL. We recommend to add 5-50% of glycerol (final concentration) and aliquot for long-term storage at -20°C/-80°C. Our default final concentration of glycerol is 50%. Customers could use it as reference.

Shelf Life

The shelf life is related to many factors, storage state, buffer ingredients, storage temperature and the stability of the protein itself. Generally, the shelf life of liquid form is 6 months at -20°C/-80°C. The shelf life of lyophilized form is 12 months at -20°C/-80°C.