



# Recombinant Human Eukaryotic peptide chain release factor GTP-binding subunit ERF3A (GSPT1)

<b>Product Code</b>	CSB-YP009966HU
<b>Relevance</b>	Involved in translation termination in response to the termination codons UAA, UAG and UGA. Stimulates the activity of ERF1. Involved in regulation of mammalian cell growth. Component of the transient SURF complex which recruits UPF1 to stalled ribosomes in the context of nonsense-mediated decay (NMD) of mRNAs containing premature stop codons.
<b>Abbreviation</b>	Recombinant Human GSPT1 protein
<b>Storage</b>	The shelf life is related to many factors, storage state, buffer ingredients, storage temperature and the stability of the protein itself. Generally, the shelf life of liquid form is 6 months at -20°C/-80°C. The shelf life of lyophilized form is 12 months at -20°C/-80°C.
<b>Uniprot No.</b>	P15170
<b>Product Type</b>	Recombinant Protein
<b>Immunogen Species</b>	Homo sapiens (Human)
<b>Purity</b>	Greater than 85% as determined by SDS-PAGE.
<b>Sequence</b>	MELSEPIVENGETEMSPEESWEHKEEISEAEPGGGSLGDGRPPEESAHEMME EEEEIPKPKSVVAPPGAPKKEHVNVVFIGHVVDAGKSTIGGGQIMYLTGMVDKRTL EKYEREAKEKNRETWYLSWALDTNQEERDKGKTVEVGRAYFETEKKHFTILD APGHKSFVPNMIGGASQADLAVLVISARKGEFETGFEKGGQTREHAMLAKTA GVKHLIVLINKMDDPTVNWSNERYEECKEKLVPFLKKVGFNPKKDIHFMPCSG LTGANLKEQSDFCPWYIGLPFIPYLDNLPNFNRSVDGPRLPIVDKYKDMGTVV LGKLESGSICKGQQLVMMPNKHNVVLGILSDDVETDTVAPGENLKIRLKGIEE EEILPGFILCDPNNLCHSGRTFDAQIVIIHKSIIICPGYNAVLHIHTCIEEVEITALIC LVDKKSGEKSKTRPRFVKQDQVCIARLRTAGTICLETFKDFPQMGRFTLRDEG KTIAIGKVLKLVPEKD
<b>Research Area</b>	Epigenetics and Nuclear Signaling
<b>Source</b>	Yeast
<b>Target Names</b>	GSPT1
<b>Protein Names</b>	Recommended name: Eukaryotic peptide chain release factor GTP-binding subunit ERF3A Short name= Eukaryotic peptide chain release factor subunit 3a Short name= eRF3a Alternative name(s): G1 to S phase transition protein 1 homolog
<b>Expression Region</b>	1-499aa
<b>Notes</b>	Repeated freezing and thawing is not recommended. Store working aliquots at 4°C for up to one week.

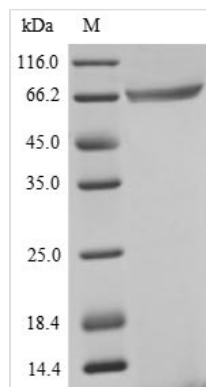


**Tag Info** N-terminal 10xHis-tagged and C-terminal Myc-tagged

**Mol. Weight** 59.8 kDa

**Protein Length** Full Length

### Image



(Tris-Glycine gel) Discontinuous SDS-PAGE (reduced) with 5% enrichment gel and 15% separation gel.

**Reconstitution** We recommend that this vial be briefly centrifuged prior to opening to bring the contents to the bottom. Please reconstitute protein in deionized sterile water to a concentration of 0.1-1.0 mg/mL. We recommend to add 5-50% of glycerol (final concentration) and aliquot for long-term storage at -20°C/-80°C. Our default final concentration of glycerol is 50%. Customers could use it as reference.

**Shelf Life** The shelf life is related to many factors, storage state, buffer ingredients, storage temperature and the stability of the protein itself. Generally, the shelf life of liquid form is 6 months at -20°C/-80°C. The shelf life of lyophilized form is 12 months at -20°C/-80°C.