

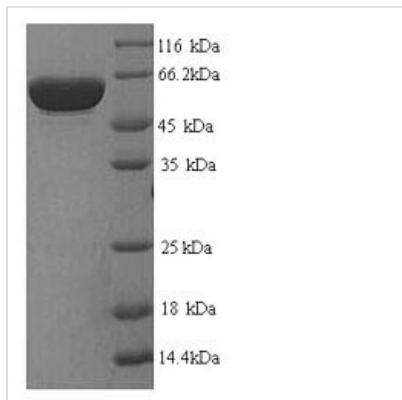


Recombinant Human Platelet glycoprotein Ib alpha chain (GP1BA), partial

Product Code	CSB-YP009685HU(A4)
Relevance	GP-Ib, a surface membrane protein of platelets, participates in the formation of platelet plugs by binding to the A1 domain of vWF, which is already bound to the subendothelium.
Abbreviation	Recombinant Human GP1BA protein, partial
Storage	The shelf life is related to many factors, storage state, buffer ingredients, storage temperature and the stability of the protein itself. Generally, the shelf life of liquid form is 6 months at -20°C/-80°C. The shelf life of lyophilized form is 12 months at -20°C/-80°C.
Uniprot No.	BC027955
Alias	Antigen CD42b-alpha CD_antigen: CD42b Cleaved into the following chain: Glycocalicin
Product Type	Recombinant Protein
Purity	Greater than 90% as determined by SDS-PAGE.
Sequence	HPICEVSKVASHLEVNC DKRNLTALPPDLPKD TTILHLS ENLLYTFSLATLMPYT RLTQLNLDRCELT KLQVDGTL PVLGTL DLSHNQLQSLPLL GQTLPALT VLDVSF NRLTSLPLGALRGLGELQELY LKGNELKTLP PGLLTPTPKLEKLSLANNNLTELP AGLLNGLENLDTLL LQENSLYTI PKGFFGSHLLPFA FLHGPNWLCNCEILYFRR WLQDNAENVYVWKQGV DVKAMTSNVASVQCDNSDKFPVYKYPGKGCPTLG DEGDTDLYDYYPEEDTEGDKVRATRTVVKFPTKAHTTPWGLFYSWSTASLDS QMPSSLHPTQESTKEQTTFPPRWTPNFTLHMESITFSKTPKSTTEPTPSPTTS EPVPEPAPNMTTLEPTPSPTTPEPTSEPA SPTTPEPTPIPTIATSP TILVSATSL ITPKSTFLT TTKPVS LLESTKKTIP EL DQPPKLRGVLQGHLESSRNDPFLHPDFC CLLPLGFYVLGLFWLLFASVVLILLLSWVGH
Research Area	Cardiovascular
Source	Yeast
Target Names	GP1BA
Protein Names	Recommended name: Platelet glycoprotein Ib alpha chain Short name= GP-Ib alpha Short name= GPIb-alpha Short name= GPIbA Short name= Glycoprotein Ibalpha Alternative name(s): Antigen CD42b-alpha CD_antigen= CD42bCleaved i
Expression Region	17-531aa
Notes	Repeated freezing and thawing is not recommended. Store working aliquots at 4°C for up to one week.
Tag Info	N-terminal 6xHis-tagged
Mol. Weight	58.9kDa


Protein Length

Partial of BC027955

Image


(Tris-Glycine gel) Discontinuous SDS-PAGE (reduced) with 5% enrichment gel and 15% separation gel.

Reconstitution

We recommend that this vial be briefly centrifuged prior to opening to bring the contents to the bottom. Please reconstitute protein in deionized sterile water to a concentration of 0.1-1.0 mg/mL. We recommend to add 5-50% of glycerol (final concentration) and aliquot for long-term storage at -20°C/-80°C. Our default final concentration of glycerol is 50%. Customers could use it as reference.

Shelf Life

The shelf life is related to many factors, storage state, buffer ingredients, storage temperature and the stability of the protein itself. Generally, the shelf life of liquid form is 6 months at -20°C/-80°C. The shelf life of lyophilized form is 12 months at -20°C/-80°C.