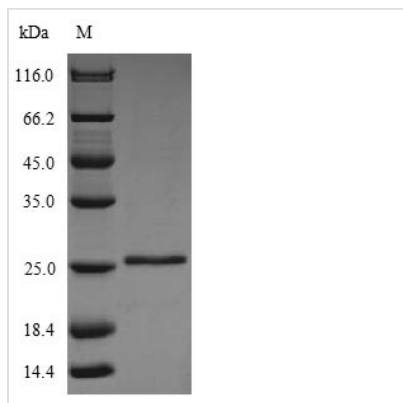




Recombinant Bovine Glycolipid transfer protein (GLTP)

Product Code	CSB-YP009539BO
Relevance	Accelerates the intermembrane transfer of various glycolipids. Catalyzes the transfer of various glycosphingolipids between membranes but does not catalyze the transfer of phospholipids. May be involved in the intracellular translocation of glucosylceramides.
Abbreviation	Recombinant Bovine GLTP protein
Storage	The shelf life is related to many factors, storage state, buffer ingredients, storage temperature and the stability of the protein itself. Generally, the shelf life of liquid form is 6 months at -20°C/-80°C. The shelf life of lyophilized form is 12 months at -20°C/-80°C.
Uniprot No.	P68265
Product Type	Recombinant Protein
Immunogen Species	Bos taurus (Bovine)
Purity	Greater than 85% as determined by SDS-PAGE.
Sequence	ALLAEHLLRPLPADKQIETGPFLEAVSHLPPFFDCLGSPVFTPIKADISGNITKIK AVYDTNPTKFRTLQNILEVEKEMYGAEWPKVGATLALMWLKRGLRFIQVFLQSI CDGERDENHPNLIRVNA TKAYEMALKKYHGWIVQKIFQAALYAAPYKSDFLKA LSKGQNVTEEECLEKVRLFLVNYTATIDVIYEMYTRMNAELNYKV
Research Area	Signal Transduction
Source	Yeast
Target Names	GLTP
Protein Names	Recommended name: Glycolipid transfer protein Short name= GLTP
Expression Region	2-209aa
Notes	Repeated freezing and thawing is not recommended. Store working aliquots at 4°C for up to one week.
Tag Info	N-terminal 6xHis-tagged
Mol. Weight	25.8kD
Protein Length	Full Length of Mature Protein
Image	



(Tris-Glycine gel) Discontinuous SDS-PAGE (reduced) with 5% enrichment gel and 15% separation gel.

Reconstitution

We recommend that this vial be briefly centrifuged prior to opening to bring the contents to the bottom. Please reconstitute protein in deionized sterile water to a concentration of 0.1-1.0 mg/mL. We recommend to add 5-50% of glycerol (final concentration) and aliquot for long-term storage at -20°C/-80°C. Our default final concentration of glycerol is 50%. Customers could use it as reference.

Shelf Life

The shelf life is related to many factors, storage state, buffer ingredients, storage temperature and the stability of the protein itself. Generally, the shelf life of liquid form is 6 months at -20°C/-80°C. The shelf life of lyophilized form is 12 months at -20°C/-80°C.