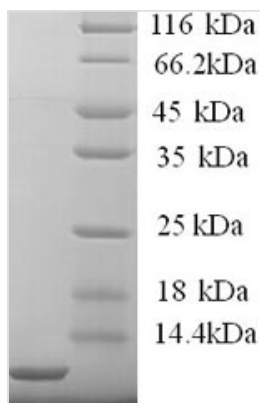




Recombinant Human High affinity immunoglobulin epsilon receptor subunit gamma (FCER1G), partial

Product Code	CSB-YP008533HU1
Relevance	Associates with a variety of FcR alpha chains to form a functional signaling complex. Regulates several aspects of the immune response. The gamma subunit has a critical role in allowing the IgE Fc receptor to reach the cell surface. Also involved in collagen-mediated platelet activation and in neutrophil activation mediated by integrin.
Abbreviation	Recombinant Human FCER1G protein, partial
Storage	The shelf life is related to many factors, storage state, buffer ingredients, storage temperature and the stability of the protein itself. Generally, the shelf life of liquid form is 6 months at -20°C/-80°C. The shelf life of lyophilized form is 12 months at -20°C/-80°C.
Uniprot No.	P30273
Alias	Fc receptor gamma-chain ;FcRgammaFc-epsilon RI-gammaIgE Fc receptor subunit gamma ;FceRI gamma
Product Type	Recombinant Protein
Immunogen Species	Homo sapiens (Human)
Purity	Greater than 90% as determined by SDS-PAGE.
Sequence	RLKIQVRKAAITSYEKSDGVYTGLSTRNQETYETLKHEKPPQ
Research Area	Immunology
Source	Yeast
Target Names	FCER1G
Protein Names	Recommended name: High affinity immunoglobulin epsilon receptor subunit gammaAlternative name(s): Fc receptor gamma-chain Short name= FcRgamma Fc-epsilon RI-gamma IgE Fc receptor subunit gamma Short name= FceRI gamma
Expression Region	45-86aa
Notes	Repeated freezing and thawing is not recommended. Store working aliquots at 4°C for up to one week.
Tag Info	N-terminal 6xHis-tagged
Mol. Weight	6.9kDa
Protein Length	Cytoplasmic Domain
Image	



(Tris-Glycine gel) Discontinuous SDS-PAGE (reduced) with 5% enrichment gel and 15% separation gel.

Reconstitution

We recommend that this vial be briefly centrifuged prior to opening to bring the contents to the bottom. Please reconstitute protein in deionized sterile water to a concentration of 0.1-1.0 mg/mL. We recommend to add 5-50% of glycerol (final concentration) and aliquot for long-term storage at -20°C/-80°C. Our default final concentration of glycerol is 50%. Customers could use it as reference.

Shelf Life

The shelf life is related to many factors, storage state, buffer ingredients, storage temperature and the stability of the protein itself. Generally, the shelf life of liquid form is 6 months at -20°C/-80°C. The shelf life of lyophilized form is 12 months at -20°C/-80°C.