

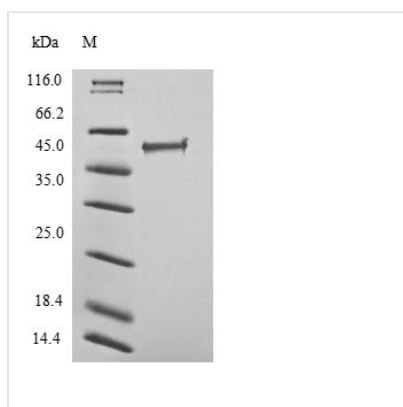


Recombinant Human Transcriptional regulator ERG (ERG)

Product Code	CSB-YP007781HU
Relevance	Transcriptional regulator. May participate in transcriptional regulation through the recruitment of SETDB1 histone methyltransferase and subsequent modification of local chromatin structure.
Abbreviation	Recombinant Human ERG protein
Storage	The shelf life is related to many factors, storage state, buffer ingredients, storage temperature and the stability of the protein itself. Generally, the shelf life of liquid form is 6 months at -20°C/-80°C. The shelf life of lyophilized form is 12 months at -20°C/-80°C.
Uniprot No.	P11308
Alias	Transforming protein ERG
Product Type	Recombinant Protein
Immunogen Species	Homo sapiens (Human)
Purity	Greater than 90% as determined by SDS-PAGE.
Sequence	MIQTVDPAAHIKEALSVVSEDQSLFECAYGTPHLAKTEMTASSSSDYGQTSK MSPRVPQQDWLSQPPARVTIKMECNPSQVNGSRNSPDECSVAKGGKMGVS PDTVGMNYGSYMEEKHMPPNMTTNERRIVPADPTLWSTDHVRQWLEWAV KEYGLPDVNILLFQNIDGKELCKMTKDDFQRLTPSYNADILLSHLHYLRETPLPH LTSDVDKALQNSPRLMHARNTGGAAFIFPNTSVYPEATQRITTRPDLPEPP RRSAWTGHGHPTPQSKAAQPSPSTVPKTEDQRPQLDPYQILGPTSSRLANPG SGQIQLWQFLELLSDSSNSSCITWEGTNGEFKMTDPDEVARRWGERKSKPN MNYDKLSRALRYYYDKNIMTKVHGKRYAYKFDHGHIAQALQPHPPPESSLYKYP SDLPYMGSYHAHPQKMNFVAPHPPALPVTSSSFFAAPNPYWNSPTGGIYPNT RLPTSHMPSHLGTYY
Research Area	Transcription
Source	Yeast
Target Names	ERG
Protein Names	Recommended name: Transcriptional regulator ERG Alternative name(s): Transforming protein ERG
Expression Region	1-486aa
Notes	Repeated freezing and thawing is not recommended. Store working aliquots at 4°C for up to one week.
Tag Info	N-terminal 6xHis-tagged
Mol. Weight	56.6kDa
Protein Length	Full Length



Image



(Tris-Glycine gel) Discontinuous SDS-PAGE (reduced) with 5% enrichment gel and 15% separation gel.

Description

The expression of recombinant Human ERG protein in Yeast cells requires incorporating a DNA fragment encoding the Human ERG protein (1-486aa) into a plasmid vector and transforming this vector into Yeast cells. Positive cells are screened, cultured, and induced to produce the ERG protein. A N-terminal 6xHis tag is attached to the protein. The recombinant Human ERG protein is collected and purified from the cell lysate through affinity purification. It is assessed through SDS-PAGE and subsequent staining of the gel with Coomassie Brilliant Blue, with a purity of exceeding 90%.

Reconstitution

We recommend that this vial be briefly centrifuged prior to opening to bring the contents to the bottom. Please reconstitute protein in deionized sterile water to a concentration of 0.1-1.0 mg/mL. We recommend to add 5-50% of glycerol (final concentration) and aliquot for long-term storage at -20°C/-80°C. Our default final concentration of glycerol is 50%. Customers could use it as reference.

Shelf Life

The shelf life is related to many factors, storage state, buffer ingredients, storage temperature and the stability of the protein itself. Generally, the shelf life of liquid form is 6 months at -20°C/-80°C. The shelf life of lyophilized form is 12 months at -20°C/-80°C.