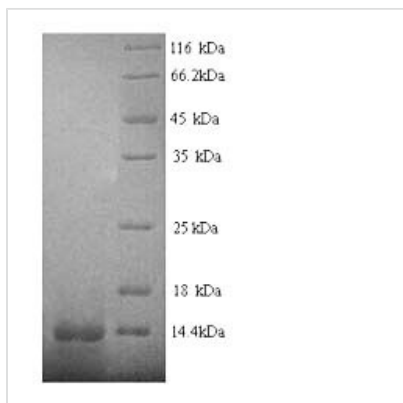




Recombinant Human Early growth response protein 1 (EGR1), partial

Product Code	CSB-YP007484HU
Relevance	Transcriptional regulator. Recognizes and binds to the DNA sequence 5'-CGCCCCCGC-3'(EGR-site). Activates the transcription of target genes whose products are required for mitogenesis and differentiation.
Abbreviation	Recombinant Human EGR1 protein, partial
Storage	The shelf life is related to many factors, storage state, buffer ingredients, storage temperature and the stability of the protein itself. Generally, the shelf life of liquid form is 6 months at -20°C/-80°C. The shelf life of lyophilized form is 12 months at -20°C/-80°C.
Uniprot No.	P18146
Alias	AT225Nerve growth factor-induced protein A ;NGFI-ATranscription factor ETR103Transcription factor Zif268Zinc finger protein 225Zinc finger protein Krox-24
Product Type	Recombinant Protein
Immunogen Species	Homo sapiens (Human)
Purity	Greater than 90% as determined by SDS-PAGE.
Sequence	SPVATSYSPSPVTTSYPSPATTSYSPVPVPTSFSSPGSSSTYPSPVHSGFPSPSVA TTYSSVPPAFPAQVSSFPSSAVTNSFSASTGLSDMTATFSPRTIEIC
Research Area	Transcription
Source	Yeast
Target Names	EGR1
Protein Names	Recommended name: Early growth response protein 1 Short name= EGR-1 Alternative name(s): AT225 Nerve growth factor-induced protein A Short name= NGFI-A Transcription factor ETR103 Transcription factor Zif268 Zinc fing
Expression Region	444-543aa
Notes	Repeated freezing and thawing is not recommended. Store working aliquots at 4°C for up to one week.
Tag Info	N-terminal 6xHis-tagged
Mol. Weight	12.1kDa
Protein Length	Partial
Image	



(Tris-Glycine gel) Discontinuous SDS-PAGE (reduced) with 5% enrichment gel and 15% separation gel.

Reconstitution

We recommend that this vial be briefly centrifuged prior to opening to bring the contents to the bottom. Please reconstitute protein in deionized sterile water to a concentration of 0.1-1.0 mg/mL. We recommend to add 5-50% of glycerol (final concentration) and aliquot for long-term storage at -20°C/-80°C. Our default final concentration of glycerol is 50%. Customers could use it as reference.

Shelf Life

The shelf life is related to many factors, storage state, buffer ingredients, storage temperature and the stability of the protein itself. Generally, the shelf life of liquid form is 6 months at -20°C/-80°C. The shelf life of lyophilized form is 12 months at -20°C/-80°C.