

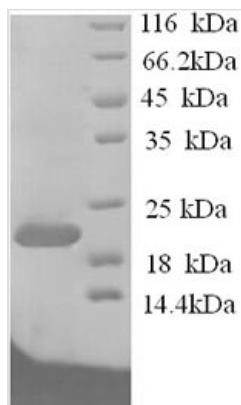


Recombinant Rat Ephrin-A1 (Efna1)

Product Code	CSB-YP007460RA
Relevance	Cell surface GPI-bound ligand for Eph receptors, a family of receptor tyrosine kinases which are crucial for migration, repulsion and adhesion during neuronal, vascular and epithelial development. Binds promiscuously Eph receptors residing on adjacent cells, leading to contact-dependent bidirectional signaling into neighboring cells. Plays an important role in angiogenesis and tumor neovascularization. The recruitment of VAV2, VAV3 and PI3-kinase p85 subunit by phosphorylated EPHA2 is critical for EFNA1-induced RAC1 GTPase activation and vascular endothelial cell migration and assembly. Exerts anti-oncogenic effects in tumor cells through activation and down-regulation of EPHA2. Activates EPHA2 by inducing tyrosine phosphorylation which leads to its internalization and degradation. Acts as a negative regulator in the tumorigenesis of gliomas by down-regulating EPHA2 and FAK. Can evoke collapse of embryonic neuronal growth cone and regulates dendritic spine morphogenesis.
Abbreviation	Recombinant Rat Efna1 protein
Storage	The shelf life is related to many factors, storage state, buffer ingredients, storage temperature and the stability of the protein itself. Generally, the shelf life of liquid form is 6 months at -20°C/-80°C. The shelf life of lyophilized form is 12 months at -20°C/-80°C.
Uniprot No.	P97553
Alias	EPH-related receptor tyrosine kinase ligand 1 ;LERK-1 Immediate early response protein B61
Product Type	Recombinant Protein
Immunogen Species	Rattus norvegicus (Rat)
Purity	Greater than 90% as determined by SDS-PAGE.
Sequence	ADRHIVFWNSSNPKFREEDYTVHVQLNDYLDIICPHYEDDSVADAAMERYTLY MVEHQEYVTCEPQSKDQVRWKCQNQPSAKHGPEKLSEKFQRFTPTLGLKEFK EGHSYYYISKPIYHQETQCLKLKVTVNGKITHSPAHANPQEKRLQADDPEVQ VLHSIGHS
Research Area	Others
Source	Yeast
Target Names	Efna1
Protein Names	Recommended name: Ephrin-A1 Alternative name(s): EPH-related receptor tyrosine kinase ligand 1 Short name= LERK-1 Immediate early response protein B61 Cleaved into the following chain: 1. Ephrin-A1, secreted form
Expression Region	18-182aa
Notes	Repeated freezing and thawing is not recommended. Store working aliquots at 4°C for up to one week.



Tag Info	N-terminal 6xHis-tagged
Mol. Weight	21.4kDa
Protein Length	Full Length of Mature Protein

Image


(Tris-Glycine gel) Discontinuous SDS-PAGE (reduced) with 5% enrichment gel and 15% separation gel.

Reconstitution	We recommend that this vial be briefly centrifuged prior to opening to bring the contents to the bottom. Please reconstitute protein in deionized sterile water to a concentration of 0.1-1.0 mg/mL. We recommend to add 5-50% of glycerol (final concentration) and aliquot for long-term storage at -20°C/-80°C. Our default final concentration of glycerol is 50%. Customers could use it as reference.
-----------------------	-------------------------------------------------------------------------------------------------------------------------------------------------------------------------------------------------------------------------------------------------------------------------------------------------------------------------------------------------------------------------------------------------------------

Shelf Life	The shelf life is related to many factors, storage state, buffer ingredients, storage temperature and the stability of the protein itself. Generally, the shelf life of liquid form is 6 months at -20°C/-80°C. The shelf life of lyophilized form is 12 months at -20°C/-80°C.
-------------------	---------------------------------------------------------------------------------------------------------------------------------------------------------------------------------------------------------------------------------------------------------------------------------