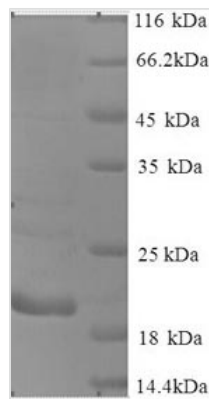




Recombinant Human Cancer/testis antigen 1 (CTAG1A)

Product Code	CSB-YP006125HU
Abbreviation	Recombinant Human CTAG1A protein
Storage	The shelf life is related to many factors, storage state, buffer ingredients, storage temperature and the stability of the protein itself. Generally, the shelf life of liquid form is 6 months at -20°C/-80°C. The shelf life of lyophilized form is 12 months at -20°C/-80°C.
Uniprot No.	P78358
Alias	Autoimmunogenic cancer/testis antigen NY-ESO-1Cancer/testis antigen 6.1 ;CT6.1L antigen family member 2 ;LAGE-2
Product Type	Recombinant Protein
Immunogen Species	Homo sapiens (Human)
Purity	Greater than 90% as determined by SDS-PAGE.
Sequence	MQAEGRGTTGGSTGDADGPGGPGIPDGPGGNAGGPGGEAGATGGRGPRGAG AARASGPGGGAPRGPHGGAASGLNGCCRCGARGPESRLLEFYLPMPFATPM EAELARRSLAQDAPPLPVPGVLLKEFTVSGNILTIRLTAAADHRQLQLSISSCLQQ LSELLMWITQCFLPVFLAQPPSGQRR
Research Area	Cancer
Source	Yeast
Target Names	CTAG1A
Protein Names	Recommended name: Cancer/testis antigen 1 Alternative name(s): Autoimmunogenic cancer/testis antigen NY-ESO-1 Cancer/testis antigen 6.1 Short name= CT6.1 L antigen family member 2 Short name= LAGE-2
Expression Region	1-180aa
Notes	Repeated freezing and thawing is not recommended. Store working aliquots at 4°C for up to one week.
Tag Info	N-terminal 6xHis-tagged
Mol. Weight	20.0kDa
Protein Length	Full Length
Image	



(Tris-Glycine gel) Discontinuous SDS-PAGE (reduced) with 5% enrichment gel and 15% separation gel.

Description

Recombinant Human Cancer/testis antigen 1 (CTAG1A) is a full-length protein expressed in the yeast. Structurally, it is 180 amino acid long protein of 20 kDa, containing a 6xHis-tag at the N-terminus. SDS-PAGE analysis measured its purity over 90%. In addition to producing specific antibodies, this recombinant CTAG1A protein can also be used in the studies of CTAG1A-expressing cancers.

The expression of CTAG1A, also called NY-ESO-1, is restricted to immune-privileged organs such as testis and placenta (in spermatogonia/oogonia). CTAG1A1 is also highly and frequently expressed in malignancies and can trigger potent integrated natural humoral and cellular responses. These characteristics make NY-ESO-1 become a potential target for immunotherapy against NY-ESO-1 expressing tumors.

Reconstitution

We recommend that this vial be briefly centrifuged prior to opening to bring the contents to the bottom. Please reconstitute protein in deionized sterile water to a concentration of 0.1-1.0 mg/mL. We recommend to add 5-50% of glycerol (final concentration) and aliquot for long-term storage at -20°C/-80°C. Our default final concentration of glycerol is 50%. Customers could use it as reference.

Shelf Life

The shelf life is related to many factors, storage state, buffer ingredients, storage temperature and the stability of the protein itself. Generally, the shelf life of liquid form is 6 months at -20°C/-80°C. The shelf life of lyophilized form is 12 months at -20°C/-80°C.