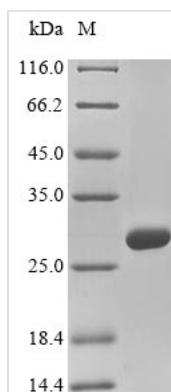




Recombinant Mouse Collagen alpha-2 (IV) chain (Col4a2), partial

Product Code	CSB-YP005742MO
Relevance	Type IV collagen is the major structural component of glomerular basement membranes (GBM), forming a 'chicken-wire' meshwork together with laminins, proteoglycans and entactin/nidogen. Canstatin, a cleavage product corresponding to the collagen alpha 2(IV) NC1 domain, possesses both anti-angiogenic and anti-tumor cell activity. It inhibits proliferation and migration of endothelial cells, reduces mitochondrial membrane potential, and induces apoptosis. Specifically induces Fas-dependent apoptosis and activates procaspase-8 and -9 activity. Ligand for alphavbeta3 and alphavbeta5 integrins
Abbreviation	Recombinant Mouse Col4a2 protein, partial
Storage	The shelf life is related to many factors, storage state, buffer ingredients, storage temperature and the stability of the protein itself. Generally, the shelf life of liquid form is 6 months at -20°C/-80°C. The shelf life of lyophilized form is 12 months at -20°C/-80°C.
Uniprot No.	P08122
Product Type	Recombinant Protein
Immunogen Species	Mus musculus (Mouse)
Purity	Greater than 90% as determined by SDS-PAGE.
Sequence	VSIGYLLVKHSQTDQEP MCPVGMNKLWSGYSLLYFEGQEKAHNQDLGLAGSC LARFSTMPFLYCNP GDVCYYASRNDKSYWLSTTAPLP MMPVAEEEEIKPYISRC SVCEAPAVAI AVHSQDTSIPHCPAGWRSLWIGYSFLMHTAAGDEGGGQSLVS PGSCLED FRATPFIECN GGRGTCHYFANKYSFWLTTIPEQNFQSTPSADTLKA GLIRTHISRCQVCMKNL
Research Area	others
Source	Yeast
Target Names	Col4a2
Protein Names	Recommended name: Collagen alpha-2(IV) chain Cleaved into the following chain: 1. Canstatin
Expression Region	1481-1707aa
Notes	Repeated freezing and thawing is not recommended. Store working aliquots at 4°C for up to one week.
Tag Info	N-terminal 6xHis-sumostar-tagged
Mol. Weight	41.1 kDa
Protein Length	Partial
Image	



(Tris-Glycine gel) Discontinuous SDS-PAGE (reduced) with 5% enrichment gel and 15% separation gel.

Reconstitution

We recommend that this vial be briefly centrifuged prior to opening to bring the contents to the bottom. Please reconstitute protein in deionized sterile water to a concentration of 0.1-1.0 mg/mL. We recommend to add 5-50% of glycerol (final concentration) and aliquot for long-term storage at -20°C/-80°C. Our default final concentration of glycerol is 50%. Customers could use it as reference.

Shelf Life

The shelf life is related to many factors, storage state, buffer ingredients, storage temperature and the stability of the protein itself. Generally, the shelf life of liquid form is 6 months at -20°C/-80°C. The shelf life of lyophilized form is 12 months at -20°C/-80°C.