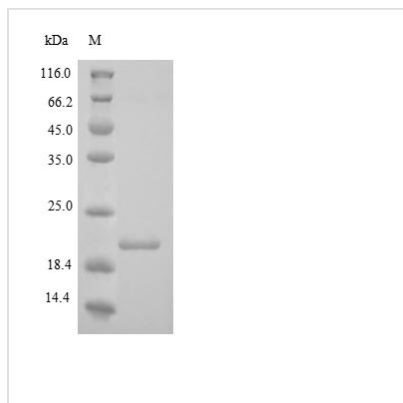


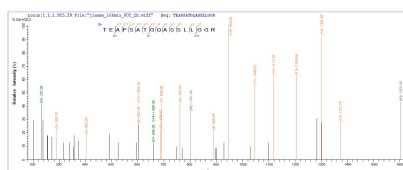


Recombinant Human Collagen alpha-1 (XVIII) chain (COL18A1), partial

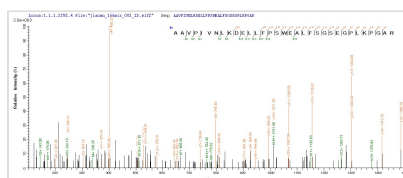
Product Code	CSB-YP005725HU
Relevance	COLA18A probably plays a major role in determining the retinal structure as well as in the closure of the neural tube. Endostatin potentially inhibits endothelial cell proliferation and angiogenesis. May inhibit angiogenesis by binding to the heparan sulfate proteoglycans involved in growth factor signaling.
Abbreviation	Recombinant Human COL18A1 protein, partial
Storage	The shelf life is related to many factors, storage state, buffer ingredients, storage temperature and the stability of the protein itself. Generally, the shelf life of liquid form is 6 months at -20°C/-80°C. The shelf life of lyophilized form is 12 months at -20°C/-80°C.
Uniprot No.	P39060
Product Type	Recombinant Protein
Immunogen Species	Homo sapiens (Human)
Purity	Greater than 90% as determined by SDS-PAGE.
Sequence	QPVHLHLVALNSPLSGGMRGIRGADFQCFQQARAVGLAGTFRAFLSSRLQDLY SIVRRADRAAVPIVNLKDELLFPSWEALFSGSEGPLKPGARIFSFDGKDVL RHP TWPQKSVWHGSDPNGRRLTESYCETWRTEAPSATGQASSLLGGRLLGQSAA SCHHAYIVLCIENSFMTASK
Research Area	Cell Adhesion
Source	Yeast
Target Names	COL18A1
Protein Names	Recommended name: Collagen alpha-1(XVIII) chain Cleaved into the following chain: 1. Endostatin
Expression Region	1578-1754aa
Notes	Repeated freezing and thawing is not recommended. Store working aliquots at 4°C for up to one week.
Tag Info	N-terminal 6xHis-tagged
Mol. Weight	21.3kDa
Protein Length	Partial
Image	



(Tris-Glycine gel) Discontinuous SDS-PAGE (reduced) with 5% enrichment gel and 15% separation gel.



Based on the SEQUEST from database of Yeast host and target protein, the LC-MS/MS Analysis result of CSB-YP005725HU could indicate that this peptide derived from Yeast-expressed Homo sapiens (Human) COL18A1.



Based on the SEQUEST from database of Yeast host and target protein, the LC-MS/MS Analysis result of CSB-YP005725HU could indicate that this peptide derived from Yeast-expressed Homo sapiens (Human) COL18A1.

Reconstitution

We recommend that this vial be briefly centrifuged prior to opening to bring the contents to the bottom. Please reconstitute protein in deionized sterile water to a concentration of 0.1-1.0 mg/mL. We recommend to add 5-50% of glycerol (final concentration) and aliquot for long-term storage at -20°C/-80°C. Our default final concentration of glycerol is 50%. Customers could use it as reference.

Shelf Life

The shelf life is related to many factors, storage state, buffer ingredients, storage temperature and the stability of the protein itself.

Generally, the shelf life of liquid form is 6 months at -20°C/-80°C. The shelf life of lyophilized form is 12 months at -20°C/-80°C.