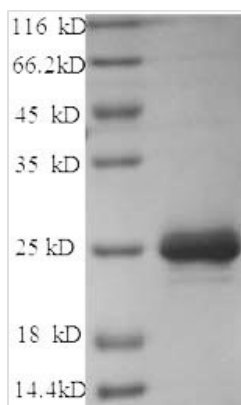




# Recombinant Dog Chymase (CMA1)

<b>Product Code</b>	CSB-YP005599DO
<b>Relevance</b>	Major secreted protease of mast cells with suspected roles in vasoactive peptide generation, Extracellular domain matrix degradation, and regulation of gland secretion.
<b>Abbreviation</b>	Recombinant Dog CMA1 protein
<b>Storage</b>	The shelf life is related to many factors, storage state, buffer ingredients, storage temperature and the stability of the protein itself. Generally, the shelf life of liquid form is 6 months at -20°C/-80°C. The shelf life of lyophilized form is 12 months at -20°C/-80°C.
<b>Uniprot No.</b>	P21842
<b>Alias</b>	Alpha-chymase;Mast cell protease I
<b>Product Type</b>	Recombinant Protein
<b>Immunogen Species</b>	Canis lupus familiaris (Dog) (Canis familiaris)
<b>Purity</b>	Greater than 90% as determined by SDS-PAGE.
<b>Sequence</b>	IIGGTESKPHSRPYMAHLEILTLRNHLASCGGFLIRNLFVLTAAHCAGRFIMVTL GAHNIQKKEDTWQKLEVIKQFPHPKYDDLTLRHDIMLLKLKEKANLTLAVGTLP LSPQFNFVPPGRMCRVAGWGKRQVNGSGSDTLQEVKLRLMDPQACRHYMA FDHNLQLCVGNPRKTKSAFKGDSGGPLLCAGVAQGIVSYGQNDAPPAVFTRI SHYRPWINKVLKQNKA
<b>Research Area</b>	Others
<b>Source</b>	Yeast
<b>Target Names</b>	CMA1
<b>Protein Names</b>	Recommended name: Chymase EC= 3.4.21.39 Alternative name(s): Alpha-chymase Mast cell protease I
<b>Expression Region</b>	22-249aa
<b>Notes</b>	Repeated freezing and thawing is not recommended. Store working aliquots at 4°C for up to one week.
<b>Tag Info</b>	N-terminal 6xHis-tagged
<b>Mol. Weight</b>	27.5kDa
<b>Protein Length</b>	Full Length of Mature Protein
<b>Image</b>	



(Tris-Glycine gel) Discontinuous SDS-PAGE (reduced) with 5% enrichment gel and 15% separation gel.

### Reconstitution

We recommend that this vial be briefly centrifuged prior to opening to bring the contents to the bottom. Please reconstitute protein in deionized sterile water to a concentration of 0.1-1.0 mg/mL. We recommend to add 5-50% of glycerol (final concentration) and aliquot for long-term storage at -20°C/-80°C. Our default final concentration of glycerol is 50%. Customers could use it as reference.

### Shelf Life

The shelf life is related to many factors, storage state, buffer ingredients, storage temperature and the stability of the protein itself. Generally, the shelf life of liquid form is 6 months at -20°C/-80°C. The shelf life of lyophilized form is 12 months at -20°C/-80°C.