



Recombinant Human Clathrin interactor 1 (CLINT1)

Product Code	CSB-YP005552HU
Relevance	Binds to membranes enriched in phosphatidylinositol 4,5-bisphosphate (PtdIns(4,5)P2). May have a role in transport via clathrin-coated vesicles from the trans-Golgi network to endosomes. Stimulates clathrin assembly
Abbreviation	Recombinant Human CLINT1 protein
Storage	The shelf life is related to many factors, storage state, buffer ingredients, storage temperature and the stability of the protein itself. Generally, the shelf life of liquid form is 6 months at -20°C/-80°C. The shelf life of lyophilized form is 12 months at -20°C/-80°C.
Uniprot No.	Q14677
Alias	Clathrin-interacting protein localized in the trans-Golgi region Short name: Clint Enthoprotin Epsin-4 Epsin-related protein Short name: EpsinR
Product Type	Recombinant Protein
Immunogen Species	Homo sapiens (Human)
Purity	Greater than 90% as determined by SDS-PAGE.
Sequence	MLNMWKVRELVDKATNVVMNYSEIESKVVREATND DPWG PSGQLMGEIAKATF MYEQFPELMNMLWSRMLKDNKKNWRRVYKSLLLLAYLIRNGSERVVTSAREH IYDLRSLENYHFVDEHGKDQGINIRQVKELVEFAQDDDRLEERKKAKKNKD KYVGVSSDSVGGFRYSERYDPEPKSKWDEEWDKNKSAFPFSDKLGE LSDKIG STIDDTISKFRRKDREDSPERCSDSDEEKKARRGRSPKGFEKDEEETVTTKHI HITQATETTTTRHKRTANPSKTIDLGAAAHYTGDKASPDQNASTHTPQSSVKT SVPSSKSSGDLVDLFDGTSQSTGGSADLFGGFADFGSAAASGSFSPSQVTATS GNGDFGDWSAFNQAPSGPVASSGEFFGSASQPAVELVSGSQSALGPPPAAS NSSDLFDLMGSSQATMTSSQSMNFSMMSNTNTVGLGLPMSRSQNTDMVQKSV SKTLPSTWSDPSVNISLDNLLPGMQPSKPPQPSLNTMIQQQNMQQPMNVMT QSFGAVNLSSPSNMLPVRPQTNALIGGPMMPMSMPNVMTGTMGMAPLGNTPM MNQSMGMNMNIGMSAAGMGLTGTMGMGMPNIAMTSGTVQPKQDAFANFA NFSK
Research Area	Signal Transduction
Source	Yeast
Target Names	CLINT1
Protein Names	Recommended name: Clathrin interactor 1 Alternative name(s): Clathrin-interacting protein localized in the trans-Golgi region Short name= Clint Enthoprotin Epsin-4 Epsin-related protein Short name= EpsinR
Expression Region	1-625aa
Notes	Repeated freezing and thawing is not recommended. Store working aliquots at 4°C for up to one week.

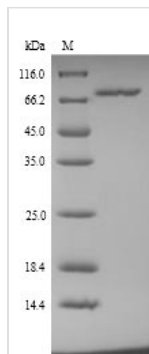


Tag Info N-terminal 6xHis-tagged

Mol. Weight 70.3kDa

Protein Length Full Length

Image



(Tris-Glycine gel) Discontinuous SDS-PAGE (reduced) with 5% enrichment gel and 15% separation gel.

Reconstitution We recommend that this vial be briefly centrifuged prior to opening to bring the contents to the bottom. Please reconstitute protein in deionized sterile water to a concentration of 0.1-1.0 mg/mL. We recommend to add 5-50% of glycerol (final concentration) and aliquot for long-term storage at -20°C/-80°C. Our default final concentration of glycerol is 50%. Customers could use it as reference.

Shelf Life The shelf life is related to many factors, storage state, buffer ingredients, storage temperature and the stability of the protein itself. Generally, the shelf life of liquid form is 6 months at -20°C/-80°C. The shelf life of lyophilized form is 12 months at -20°C/-80°C.