

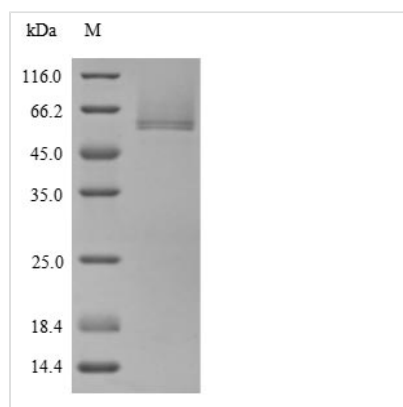


# Recombinant Human Cartilage intermediate layer protein 1 (CILP), partial

<b>Product Code</b>	CSB-YP005437HU
<b>Relevance</b>	Probably plays a role in cartilage scaffolding. May act by antagonizing TGF-beta1 (TGFB1) and IGF1 functions. Has the ability to suppress IGF1-induced proliferation and sulfated proteoglycan synthesis, and inhibits ligand-induced IGF1R autophosphorylation. May inhibit TGFB1-mediated induction of cartilage matrix genes via its interaction with TGFB1. Overexpression may lead to impair chondrocyte growth and matrix repair and indirectly promote inorganic pyrophosphate (PPi) supersaturation in aging and osteoarthritis cartilage.
<b>Abbreviation</b>	Recombinant Human CILP protein, partial
<b>Storage</b>	The shelf life is related to many factors, storage state, buffer ingredients, storage temperature and the stability of the protein itself. Generally, the shelf life of liquid form is 6 months at -20°C/-80°C. The shelf life of lyophilized form is 12 months at -20°C/-80°C.
<b>Uniprot No.</b>	O75339
<b>Product Type</b>	Recombinant Protein
<b>Immunogen Species</b>	Homo sapiens (Human)
<b>Purity</b>	Greater than 90% as determined by SDS-PAGE.
<b>Sequence</b>	EDRTFLVGNLEIRERRLFNLDVPESRRCFVKVRAYRSERFLPSEIQIGVVISVIN LEPRTGFLSNPRAWGRFDSVITGPNGACVPAFCDDQSPDAYSAYVLASLAGE ELQAVESSPKFNPNAIGVPQPYLNKLNRYRRTDHEDPRVKKTAFQISMAKPRPN SAEESNGPIYAFENLRACEEAPPSAAHFRFYQIEGDRYDYNTVPFNEDDPMS WTEDYLAWWPKPMEFRACYIKVKIVGPLEVNVRSRNMGGTHRQTVGKLYGIR DVRSTRDRDQPNVSAACLEFKCSGMLYDQDRVDRTLKVKVIPQGSCRRASVNP MLHEYLVNHLPLAVNNDTSEYTMLAPLDPLGHNYGIYTVTDQDPRTAKEIALGR CFDGTSDGSSRIMKSNVGVALTFNCVERQVGRQSAFQYLQSTPAQSPAAGTV QGRVPSRRQQRASRGGQRQGGVVASLRFPRVAQQPLIN
<b>Research Area</b>	Immunology
<b>Source</b>	Yeast
<b>Target Names</b>	CILP
<b>Protein Names</b>	Cartilage intermediate-layer protein
<b>Expression Region</b>	725-1184aa
<b>Notes</b>	Repeated freezing and thawing is not recommended. Store working aliquots at 4°C for up to one week.
<b>Tag Info</b>	N-terminal 6xHis-tagged
<b>Mol. Weight</b>	53.7 kDa
<b>Protein Length</b>	Partial



## Image



(Tris-Glycine gel) Discontinuous SDS-PAGE (reduced) with 5% enrichment gel and 15% separation gel.

## Reconstitution

We recommend that this vial be briefly centrifuged prior to opening to bring the contents to the bottom. Please reconstitute protein in deionized sterile water to a concentration of 0.1-1.0 mg/mL. We recommend to add 5-50% of glycerol (final concentration) and aliquot for long-term storage at -20°C/-80°C. Our default final concentration of glycerol is 50%. Customers could use it as reference.

## Shelf Life

The shelf life is related to many factors, storage state, buffer ingredients, storage temperature and the stability of the protein itself. Generally, the shelf life of liquid form is 6 months at -20°C/-80°C. The shelf life of lyophilized form is 12 months at -20°C/-80°C.