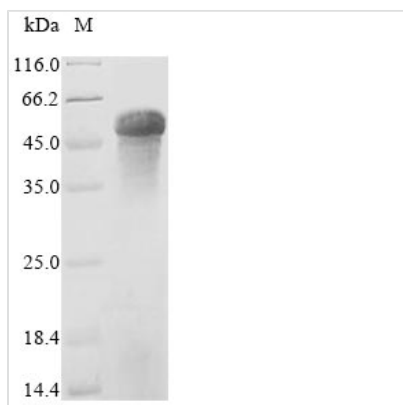


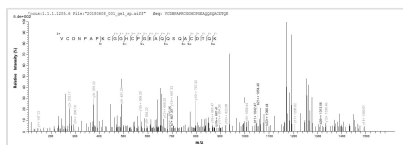


Recombinant Mouse Properdin (Cfp)

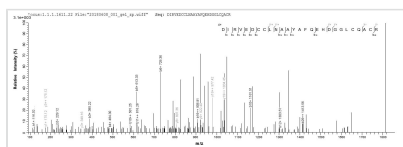
Product Code	CSB-YP005291MOf3
Relevance	A positive regulator of the alternate pathway of complement. It binds to and stabilizes the C3- and C5-convertase enzyme complexes.
Abbreviation	Recombinant Mouse Cfp protein
Storage	The shelf life is related to many factors, storage state, buffer ingredients, storage temperature and the stability of the protein itself. Generally, the shelf life of liquid form is 6 months at -20°C/-80°C. The shelf life of lyophilized form is 12 months at -20°C/-80°C.
Uniprot No.	P11680
Product Type	Recombinant Protein
Immunogen Species	Mus musculus (Mouse)
Purity	Greater than 85% as determined by SDS-PAGE.
Sequence	SDPVLCFTQYEESSGRCKGLLGRDIRVEDCCLNAAAYAFQEHDGGLCQACRSP QWSAWSLWGPCSVTCSEGSQRLRHRRCVGRGGQCSENVAPGTLEWQLQAC EDQPCCPEMGGWSEWGPWGPCSVTCSKGTQIRQRVCDNPAPKCGGHCPG EAQQSQACDTQKTCPTHGAWASWGPWSPCSGSGCLGGAQEPKETRSRSCSA PAPSHQPPGKPCSGPAYEHKACSGLPVAGGWGPWSPLSPCSVTCGLG QTLEQRTCDHPAPRHGGPFCAGDATRNQMCNKAVPCPVNGEWEAWGKWS DCSRLRMSINCEGTPGQQSRSRSCGGRKFNGKPCAGKLQDIRHCYNIHNCIM KGSWSQWSTWSLCTPPCSPNATRVQRQLCTPLLPKYPPTVSMVEGQGEKNV TFWGTPRPLCEALQGQKLVVEEKRSCLHVPVCKDPEEKKP
Research Area	Immunology
Source	Yeast
Target Names	Cfp
Protein Names	Complement factor P
Expression Region	23-464aa
Notes	Repeated freezing and thawing is not recommended. Store working aliquots at 4°C for up to one week.
Tag Info	C-terminal Myc-tagged and C-terminal 6xHis-tagged
Mol. Weight	50.9 kDa
Protein Length	Full Length of Mature Protein
Image	



(Tris-Glycine gel) Discontinuous SDS-PAGE (reduced) with 5% enrichment gel and 15% separation gel.



Based on the SEQUEST from database of Yeast host and target protein, the LC-MS/MS Analysis result of CSB-YP005291MOf3 could indicate that this peptide derived from Yeast-expressed Mus musculus (Mouse) Cfp.



Based on the SEQUEST from database of Yeast host and target protein, the LC-MS/MS Analysis result of CSB-YP005291MOf3 could indicate that this peptide derived from Yeast-expressed Mus musculus (Mouse) Cfp.

Reconstitution

We recommend that this vial be briefly centrifuged prior to opening to bring the contents to the bottom. Please reconstitute protein in deionized sterile water to a concentration of 0.1-1.0 mg/mL. We recommend to add 5-50% of glycerol (final concentration) and aliquot for long-term storage at -20°C/-80°C. Our default final concentration of glycerol is 50%. Customers could use it as reference.

Shelf Life

The shelf life is related to many factors, storage state, buffer ingredients, storage temperature and the stability of the protein itself.

Generally, the shelf life of liquid form is 6 months at -20°C/-80°C. The shelf life of lyophilized form is 12 months at -20°C/-80°C.