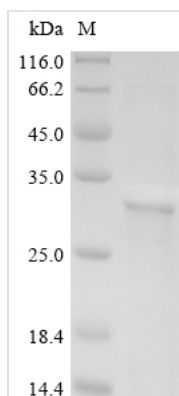




# Recombinant Human Cerebellar degeneration-related antigen 1 (CDR1)

<b>Product Code</b>	CSB-YP005102HU
<b>Abbreviation</b>	Recombinant Human CDR1 protein
<b>Storage</b>	The shelf life is related to many factors, storage state, buffer ingredients, storage temperature and the stability of the protein itself. Generally, the shelf life of liquid form is 6 months at -20°C/-80°C. The shelf life of lyophilized form is 12 months at -20°C/-80°C.
<b>Uniprot No.</b>	P51861
<b>Storage Buffer</b>	Tris-based buffer,50% glycerol
<b>Product Type</b>	Recombinant Proteins
<b>Immunogen Species</b>	Homo sapiens (Human)
<b>Purity</b>	Greater than 85% as determined by SDS-PAGE.
<b>Sequence</b>	MAWLEDVDFLEDVPLLEDIPLLEDVPLLEDVPLLEDTSRLEDINLMEDMALLED VDLLEDTDFLEDLDFSEAMDRLREDKDFLEDMDLSLEDMALEDVDLLEDTDFLE DPDFLEAIDLREDKDFLEDMDLSLEDLEAIGRCGFSGRHGFFGRRRFSGRPKLS GRLGLLGRRGFSGRLGGYWKTWIFWKTWIFWKTWIFRKYIGWKTWIFSGRC GLTGRPGFGGRRRFFWKTLDWKTWISFWKTLDWKTWISFWKTLDWKI
<b>Research Area</b>	Others
<b>Source</b>	Yeast
<b>Target Names</b>	CDR1
<b>Protein Names</b>	Recommended name: Cerebellar degeneration-related antigen 1 Alternative name(s): CDR34
<b>Expression Region</b>	1-262aa
<b>Notes</b>	Repeated freezing and thawing is not recommended. Store working aliquots at 4°C for up to one week.
<b>Tag Info</b>	N-terminal 6xHis-tagged
<b>Mol. Weight</b>	32.6
<b>Protein Length</b>	Full Length
<b>Image</b>	



(Tris-Glycine gel) Discontinuous SDS-PAGE (reduced) with 5% enrichment gel and 15% separation gel.

## Shelf Life

The shelf life is related to many factors, storage state, buffer ingredients, storage temperature and the stability of the protein itself. Generally, the shelf life of liquid form is 6 months at -20°C/-80°C. The shelf life of lyophilized form is 12 months at -20°C/-80°C.