



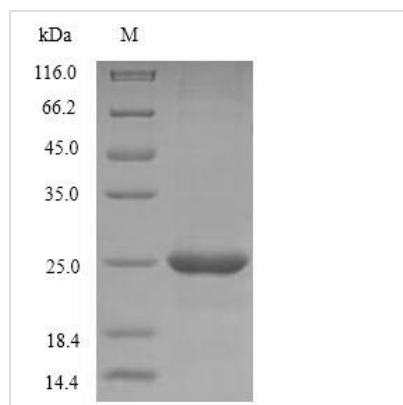
Recombinant Human CD40 ligand (CD40LG), partial

Product Code	CSB-YP004937HU1
Relevance	Cytokine that binds to CD40/TNFRSF5 (PubMed:1280226). Costimulates T-cell proliferation and cytokine production. Its cross-linking on T-cells generates a costimulatory signal which enhances the production of IL4 and IL10 in conjunction with the TCR/CD3 ligation and CD28 costimulation (PubMed:8617933). Induces the activation of NF-kappa-B and kinases MAPK8 and PAK2 in T-cells. Induces tyrosine phosphorylation of isoform 3 of CD28 (PubMed:15067037). Mediates B-cell proliferation in the absence of co-stimulus as well as IgE production in the presence of IL4. Involved in immunoglobulin class switching Release of soluble CD40L from platelets is partially regulated by GP IIb/IIIa, actin polymerization, and an matrix metalloproteinases (MMP) inhibitor-sensitive pathway.
Abbreviation	Recombinant Human CD40LG protein, partial
Storage	The shelf life is related to many factors, storage state, buffer ingredients, storage temperature and the stability of the protein itself. Generally, the shelf life of liquid form is 6 months at -20°C/-80°C. The shelf life of lyophilized form is 12 months at -20°C/-80°C.
Uniprot No.	P29965
Alias	T-cell antigen Gp39 TNF-related activation protein Short name:TRAP Tumor necrosis factor ligand superfamily member 5 CD_antigen: CD154 Cleaved into the following 2 chains: CD40 ligand, membrane form CD40 ligand, soluble form
Product Type	Recombinant Protein
Immunogen Species	Homo sapiens (Human)
Purity	Greater than 90% as determined by SDS-PAGE.
Sequence	HRRLDKIEDERNLHEDFVFMKTIQRCNTGERSLSLLNCEEIKSQFEGFVKDIML NKEETKKENSFEMQKGDQNPQIAAHVISEASSKTTSVLQWAEKGYTMSNNL VTLENGKQLTVKRQGLYYIAQVTFCSNREASSQAPFIASLCLKSPGRFERILL RAANTHSSAKPCGQQSIHLGGVFELQPGASVFNVTDPQSQVSHGTGFTSFGL LKL
Research Area	Immunology
Source	Yeast
Target Names	CD40LG
Protein Names	Recommended name: CD40 ligand Short name= CD40-LAlternative name(s): T-cell antigen Gp39 TNF-related activation protein Short name= TRAP Tumor necrosis factor ligand superfamily member 5 CD_antigen= CD154Cleaved into the foll
Expression Region	47-261aa

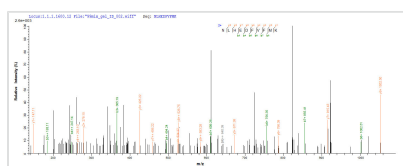


Notes	Repeated freezing and thawing is not recommended. Store working aliquots at 4°C for up to one week.
Tag Info	N-terminal 6xHis-tagged
Mol. Weight	26.1kDa
Protein Length	Extracellular Domain

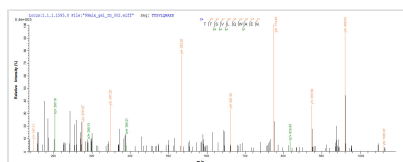
Image



(Tris-Glycine gel) Discontinuous SDS-PAGE (reduced) with 5% enrichment gel and 15% separation gel.



Based on the SEQUEST from database of Yeast host and target protein, the LC-MS/MS Analysis result of CSB-YP004937HU1 could indicate that this peptide derived from Yeast-expressed Homo sapiens (Human) CD40LG.



Based on the SEQUEST from database of Yeast host and target protein, the LC-MS/MS Analysis result of CSB-YP004937HU1 could indicate that this peptide derived from Yeast-expressed Homo sapiens (Human) CD40LG.

Reconstitution	We recommend that this vial be briefly centrifuged prior to opening to bring the contents to the bottom. Please reconstitute protein in deionized sterile water to a concentration of 0.1-1.0 mg/mL. We recommend to add 5-50% of glycerol (final concentration) and aliquot for long-term storage at -20°C/-80°C. Our default final concentration of glycerol is 50%. Customers could use it as reference.
Shelf Life	The shelf life is related to many factors, storage state, buffer ingredients, storage temperature and the stability of the protein itself. Generally, the shelf life of liquid form is 6 months at -20°C/-80°C. The shelf life of lyophilized form is 12 months at -20°C/-80°C.