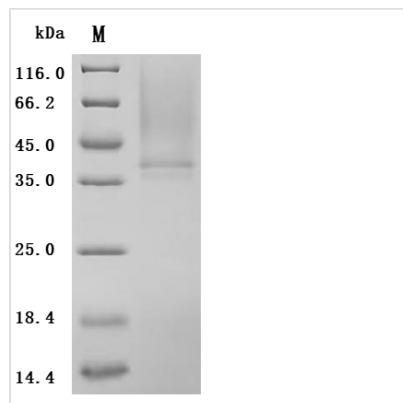


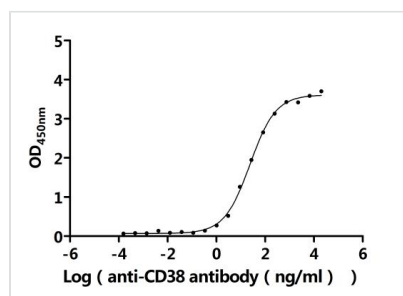


Recombinant Human ADP-ribosyl cyclase/cyclic ADP-ribose hydrolase 1 (CD38), partial (Active)

Product Code	CSB-YP004929HU1
Abbreviation	Recombinant Human CD38 protein, partial (Active)
Storage	The shelf life is related to many factors, storage state, buffer ingredients, storage temperature and the stability of the protein itself. Generally, the shelf life of liquid form is 6 months at -20°C/-80°C. The shelf life of lyophilized form is 12 months at -20°C/-80°C.
Uniprot No.	P28907
Form	Lyophilized powder
Storage Buffer	Lyophilized from a 0.2 µm filtered PBS, 6% Trehalose, pH 7.4
Product Type	Recombinant Protein
Immunogen Species	Homo sapiens (Human)
Biological Activity	Measured by its binding ability in a functional ELISA. Immobilized Human CD38 at 2 µg/mL can bind Anti-CD38 recombinant antibody(CSB-RA004929MA2HU). The EC50 is 20.07-28.73 ng/mL.
Purity	Greater than 95% as determined by SDS-PAGE. Greater than 95% as determined by SEC-HPLC.
Sequence	VPRWRQQWSGPGTTKRFPETVLARCVKYTEIHPEMRHVDCQSVWDAFKGAF ISKHPCNITEEDYQPLMKLGTQTVPCNKILLWSRIKDLAQFTQVQRDMFTLED TLLGYLADDLTWCGEFNTSKINYQSCP DWRKDCSNNPVSVFWKTVSRRFAEA ACDVVHVMLNGSRSKIFDKNSTFGSVEVHNLQPEKVQTLEAWVIHGGREDSR DLCQDPTIKELESIISKRNIIQFSCKNIIYRPDKFLQCVKNPEDSSCTSEI
Source	Yeast
Target Names	CD38
Expression Region	43-300aa
Notes	Repeated freezing and thawing is not recommended. Store working aliquots at 4°C for up to one week.
Tag Info	C-terminal 6xHis-tagged
Mol. Weight	31.4 kDa
Protein Length	Partial
Image	

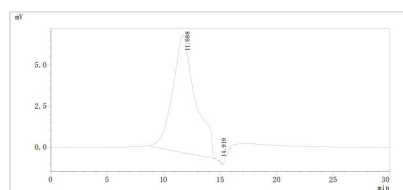


(Tris-Glycine gel) Discontinuous SDS-PAGE (reduced) with 5% enrichment gel and 15% separation gel.



Activity

Measured by its binding ability in a functional ELISA. Immobilized Human CD38 at 2 µg/ml can bind Anti-CD38 recombinant antibody(CSB-RA004929MA2HU). The EC₅₀ is 20.07-28.73 ng/mL.



The purity of CD38 was greater than 95% as determined by SEC-HPLC

Description

The expression of recombinant Human CD38 protein in Yeast cells requires incorporating a DNA fragment encoding the Human CD38 protein (43-300aa) into a plasmid vector and transforming this vector into Yeast cells. Positive cells are screened, cultured, and induced to produce the CD38 protein. A C-terminal 6xHis tag is attached to the protein. The recombinant Human CD38 protein is collected and purified from the cell lysate through affinity purification. It is assessed through SDS-PAGE and subsequent staining of the gel with Coomassie Brilliant Blue, with a purity of exceeding 85%.

Endotoxin

Less than 1.0 EU/ug as determined by LAL method.

Reconstitution

We recommend that this vial be briefly centrifuged prior to opening to bring the contents to the bottom. Please reconstitute protein in deionized sterile water to a concentration of 0.1-1.0 mg/mL. We recommend to add 5-50% of glycerol (final concentration) and aliquot for long-term storage at -20°C/-80°C. Our default final concentration of glycerol is 50%. Customers could use it as reference.

Shelf Life

The shelf life is related to many factors, storage state, buffer ingredients, storage temperature and the stability of the protein itself. Generally, the shelf life of liquid form is 6 months at -20°C/-80°C. The shelf life of lyophilized form is 12 months at -20°C/-80°C.