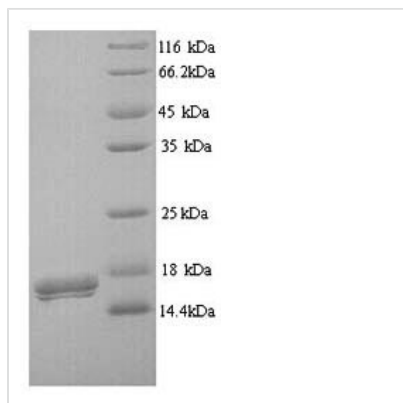




Recombinant Human CMRF35-like molecule 7 (CD300LB), partial

Product Code	CSB-YP004919HU
Relevance	Acts as an activating immune receptor through its interaction with ITAM-bearing adapter TYROBP, and also independently by recruitment of GRB2.
Abbreviation	Recombinant Human CD300LB protein, partial
Storage	The shelf life is related to many factors, storage state, buffer ingredients, storage temperature and the stability of the protein itself. Generally, the shelf life of liquid form is 6 months at -20°C/-80°C. The shelf life of lyophilized form is 12 months at -20°C/-80°C.
Uniprot No.	A8K4G0
Alias	CD300 antigen-like family member B CMRF35-A2 Immune receptor expressed on myeloid cells 3 Short name: IREM-3 Leukocyte mono-Ig-like receptor 5 Triggering receptor expressed on myeloid cells 5 Short name: TREM-5 CD_antigen: CD300b
Product Type	Recombinant Protein
Immunogen Species	Homo sapiens (Human)
Purity	Greater than 90% as determined by SDS-PAGE.
Sequence	IQGPESVRAPEQGSLTVQCHYKQGWETIYIKWWCRGVRWDTCKILITRGSEQ GEKSDRVSIKDNQKDRTFTVTMEGLRRDDADVWCGIERRGPD LGTQVKVIV DPEGAASTTASSPTNSNMAVFIGSHKRNY
Research Area	Others
Source	Yeast
Target Names	CD300LB
Protein Names	Recommended name: CMRF35-like molecule 7 Short name= CLM-7Alternative name(s): CD300 antigen-like family member B CMRF35-A2 Immune receptor expressed on myeloid cells 3 Short name= IREM-3 Leukocyte mono-Ig-like receptor 5 Tri
Expression Region	18-151aa
Notes	Repeated freezing and thawing is not recommended. Store working aliquots at 4°C for up to one week.
Tag Info	N-terminal 6xHis-tagged
Mol. Weight	17.2kDa
Protein Length	Extracellular domain
Image	



(Tris-Glycine gel) Discontinuous SDS-PAGE (reduced) with 5% enrichment gel and 15% separation gel.

Reconstitution

We recommend that this vial be briefly centrifuged prior to opening to bring the contents to the bottom. Please reconstitute protein in deionized sterile water to a concentration of 0.1-1.0 mg/mL. We recommend to add 5-50% of glycerol (final concentration) and aliquot for long-term storage at -20°C/-80°C. Our default final concentration of glycerol is 50%. Customers could use it as reference.

Shelf Life

The shelf life is related to many factors, storage state, buffer ingredients, storage temperature and the stability of the protein itself. Generally, the shelf life of liquid form is 6 months at -20°C/-80°C. The shelf life of lyophilized form is 12 months at -20°C/-80°C.