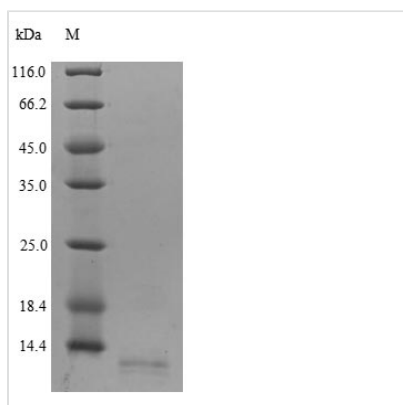




Recombinant Human C-C motif chemokine 18 (CCL18)

Product Code	CSB-YP004781HU
Relevance	Chotactic factor that attracts lymphocytes but not monocytes or granulocytes. May be involved in B-cell migration into B-cell follicles in lymph nodes. Attracts naive T-lymphocytes toward dendritic cells and activated macrophages in lymph nodes, has chotactic activity for naive T-cells, CD4+ and CD8+ T-cells and thus may play a role in both humoral and cell-mediated immunity responses.
Abbreviation	Recombinant Human CCL18 protein
Storage	The shelf life is related to many factors, storage state, buffer ingredients, storage temperature and the stability of the protein itself. Generally, the shelf life of liquid form is 6 months at -20°C/-80°C. The shelf life of lyophilized form is 12 months at -20°C/-80°C.
Uniprot No.	P55774
Alias	Alternative macrophage activation-associated CC chemokine 1 ;AMAC-1CC chemokine PAR;CDendritic cell chemokine 1 ;DC-CK1Macrophage inflammatory protein 4 ;MIP-4Pulmonary and activation-regulated chemokine;Small-inducible cytokine A18
Product Type	Recombinant Protein
Immunogen Species	Homo sapiens (Human)
Purity	Greater than 90% as determined by SDS-PAGE.
Sequence	AQVGTNKELCCLVYTSWQIPQKFIVDYSETSPQC PKPGVILLTKRGRQICADPN KKWVQKYISDLKLN
Research Area	Immunology
Source	Yeast
Target Names	CCL18
Protein Names	Recommended name: C-C motif chemokine 18 Alternative name(s): Alternative macrophage activation-associated CC chemokine 1 Short name= AMAC-1 CC chemokine PARC Dendritic cell chemokine 1 Short name= DC-CK1 Macrophage infla
Expression Region	21-89aa
Notes	Repeated freezing and thawing is not recommended. Store working aliquots at 4°C for up to one week.
Tag Info	N-terminal 6xHis-tagged
Mol. Weight	9.9kDa
Protein Length	Full Length of Mature Protein
Image	



(Tris-Glycine gel) Discontinuous SDS-PAGE (reduced) with 5% enrichment gel and 15% separation gel.

Reconstitution

We recommend that this vial be briefly centrifuged prior to opening to bring the contents to the bottom. Please reconstitute protein in deionized sterile water to a concentration of 0.1-1.0 mg/mL. We recommend to add 5-50% of glycerol (final concentration) and aliquot for long-term storage at -20°C/-80°C. Our default final concentration of glycerol is 50%. Customers could use it as reference.

Shelf Life

The shelf life is related to many factors, storage state, buffer ingredients, storage temperature and the stability of the protein itself. Generally, the shelf life of liquid form is 6 months at -20°C/-80°C. The shelf life of lyophilized form is 12 months at -20°C/-80°C.