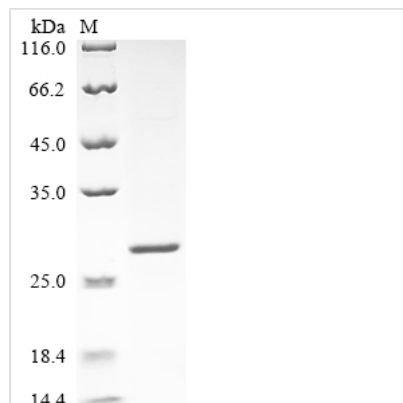




Recombinant Human Calbindin (CALB1)

Product Code	CSB-YP004432HU
Abbreviation	Recombinant Human CALB1 protein
Storage	The shelf life is related to many factors, storage state, buffer ingredients, storage temperature and the stability of the protein itself. Generally, the shelf life of liquid form is 6 months at -20°C/-80°C. The shelf life of lyophilized form is 12 months at -20°C/-80°C.
Uniprot No.	P05937
Form	Liquid or Lyophilized powder
Storage Buffer	If the delivery form is liquid, the default storage buffer is Tris/PBS-based buffer, 5%-50% glycerol. If the delivery form is lyophilized powder, the buffer before lyophilization is Tris/PBS-based buffer, 6% Trehalose.
Product Type	Recombinant Human Calbindin(CALB1)
Immunogen Species	Homo sapiens (Human)
Purity	Greater than 85% as determined by SDS-PAGE.
Sequence	AESHLQSSSLITASQFFEIWLHFDADGSGYLEGKELQNLIQELQQARKKAGLELS PEMKTFVDQYQGQRDDGKIGIVELAHVLPTEENFLLLFRCQQLKSCEEFMKTWR KYDTHSGFIETEELKNFLKDLLEKANKTVDDTKLAEYTDLMLKLFDSSNNDGKL ELTEMARLLPVQENFLLKFQGIKMCGKEFNKAFELYDQDGNQYIDENELDALL KDLCEKNKQDLINNITTYKKNIMALSDGGKLYRTDLALILCAGDN
Research Area	Others
Source	Yeast
Target Names	CALB1
Expression Region	2-261aa
Notes	Repeated freezing and thawing is not recommended. Store working aliquots at 4°C for up to one week.
Tag Info	C-terminal 6xHis-tagged
Mol. Weight	30.8 kDa
Protein Length	Full Length of Mature Protein
Image	



(Tris-Glycine gel) Discontinuous SDS-PAGE (reduced) with 5% enrichment gel and 15% separation gel.

Description

The recombinant Human CALB1 protein is produced by manipulating the expression of specific genes in Yeast cells. A DNA sequence encoding the Human CALB1 protein (2-261aa) is fused to an expression vector and subsequently transformed into Yeast cells. The cells that successfully integrate the vector are selected and cultured to induce the expression of the desired protein. A C-terminal 6xHis tag is attached to the protein. The recombinant Human CALB1 protein is then purified using affinity purification, achieving a purity level of over 85%, as confirmed by SDS-PAGE analysis.

Reconstitution

We recommend that this vial be briefly centrifuged prior to opening to bring the contents to the bottom. Please reconstitute protein in deionized sterile water to a concentration of 0.1-1.0 mg/mL. We recommend to add 5-50% of glycerol (final concentration) and aliquot for long-term storage at -20°C/-80°C. Our default final concentration of glycerol is 50%. Customers could use it as reference.

Shelf Life

The shelf life is related to many factors, storage state, buffer ingredients, storage temperature and the stability of the protein itself. Generally, the shelf life of liquid form is 6 months at -20°C/-80°C. The shelf life of lyophilized form is 12 months at -20°C/-80°C.