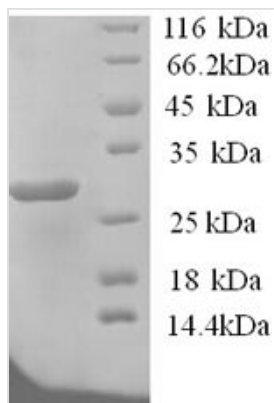




Recombinant Human Potassium-transporting ATPase subunit beta (ATP4B), partial

Product Code	CSB-YP002343HU
Relevance	Required for stabilization and maturation of the catalytic proton pump alpha subunit and may also involved in cell adhesion and establishing epithelial cell polarity.
Abbreviation	Recombinant Human ATP4B protein, partial
Storage	The shelf life is related to many factors, storage state, buffer ingredients, storage temperature and the stability of the protein itself. Generally, the shelf life of liquid form is 6 months at -20°C/-80°C. The shelf life of lyophilized form is 12 months at -20°C/-80°C.
Uniprot No.	P51164
Alias	Gastric H(+)/K(+) ATPase subunit betaProton pump beta chain
Product Type	Recombinant Protein
Immunogen Species	Homo sapiens (Human)
Purity	Greater than 90% as determined by SDS-PAGE.
Sequence	CLYVLMQTVDPYTPDYQDQLRSPGVTLRPDVYGEKGLEIVYNVSDNRTWADL TQTLHAFLAGYSPAAQEDSINCTSEQYFFQESFRAPNHTKFSCCKFTADMLQNC SGLADPNFGFEEGKPCFIKMNRIKFLPSNGSAPRVDCAFDQPRELGQPLQ VKYYPPNGTFSLHYFPYYGKKAQPHYSNPLVAAKLLNIPRNAEVAIVCKVMAE HVTFNPHDPYEGKVEFKLKIEK
Research Area	Transport
Source	Yeast
Target Names	ATP4B
Protein Names	Recommended name: Potassium-transporting ATPase subunit beta Alternative name(s): Gastric H(+)/K(+) ATPase subunit beta Proton pump beta chain
Expression Region	58-291
Notes	Repeated freezing and thawing is not recommended. Store working aliquots at 4°C for up to one week.
Tag Info	N-terminal 6xHis-tagged
Mol. Weight	28.6kDa
Protein Length	Extracellular Domain
Image	



(Tris-Glycine gel) Discontinuous SDS-PAGE (reduced) with 5% enrichment gel and 15% separation gel.

Reconstitution

We recommend that this vial be briefly centrifuged prior to opening to bring the contents to the bottom. Please reconstitute protein in deionized sterile water to a concentration of 0.1-1.0 mg/mL. We recommend to add 5-50% of glycerol (final concentration) and aliquot for long-term storage at -20°C/-80°C. Our default final concentration of glycerol is 50%. Customers could use it as reference.

Shelf Life

The shelf life is related to many factors, storage state, buffer ingredients, storage temperature and the stability of the protein itself. Generally, the shelf life of liquid form is 6 months at -20°C/-80°C. The shelf life of lyophilized form is 12 months at -20°C/-80°C.