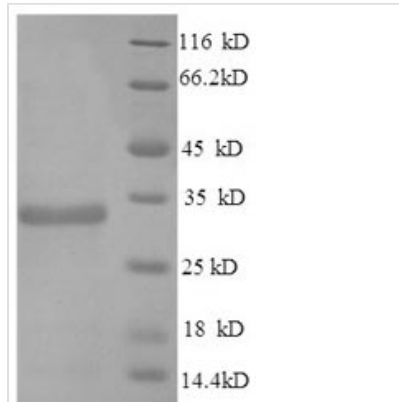




Recombinant Mouse Apolipoprotein E (Apoe)

Product Code	CSB-YP001936MO
Relevance	Mediates the binding, internalization, and catabolism of lipoprotein particles. It can serve as a ligand for the LDL (apo B/E) receptor and for the specific apo-E receptor (chylomicron remnant) of hepatic tissues.
Abbreviation	Recombinant Mouse Apoe protein
Storage	The shelf life is related to many factors, storage state, buffer ingredients, storage temperature and the stability of the protein itself. Generally, the shelf life of liquid form is 6 months at -20°C/-80°C. The shelf life of lyophilized form is 12 months at -20°C/-80°C.
Uniprot No.	P08226
Product Type	Recombinant Protein
Immunogen Species	Mus musculus (Mouse)
Purity	Greater than 90% as determined by SDS-PAGE.
Sequence	EGEPEVTDQLEWQSNQPWEQALNRFWDYLRWVQTLSDQVQEELQSSQVTQ ELTALMEDTMTEVKAYKKELEEQLGPVAAEETRARLGKEVQAAQARLGADMED LRNRLGQYRNEVHTMLGQSTEEIRARLSTHLRKMRLMRDAEDLQKRLAVY KAGAREGAERGVSAIRERLGPLVEQGRQRTANLGAGAAQPLRDRAQAFGDRI RGRLEEVGNGQARDRLVEEVREHMEEVRSKMEEQTQQIRLQAEIFQARLKGWFE PIVEDMHRQWANLMEKIQASVATNPITPVAQENQ
Research Area	Others
Source	Yeast
Target Names	Apoe
Protein Names	Recommended name: Apolipoprotein E Short name= Apo-E
Expression Region	19-311aa
Notes	Repeated freezing and thawing is not recommended. Store working aliquots at 4°C for up to one week.
Tag Info	N-terminal 6xHis-tagged
Mol. Weight	36.0kDa
Protein Length	Full Length of Mature Protein
Image	



(Tris-Glycine gel) Discontinuous SDS-PAGE (reduced) with 5% enrichment gel and 15% separation gel.

Description

The production of this Recombinant Mouse Apoe protein required the insertion of a DNA fragment (Apoe, 19-311aa) into a plasmid vector and the transferral of this vector into Yeast cells (the step of transformation). The cells were then cultured and induced to express the Apoe protein. This recombinant protein was fused with N-terminal 6xHis tag. Its purity is 90%+ determined by SDS-PAGE.

Apoe is a gene providing an instruction of making a protein named apolipoprotein E (Apo-E) in mus musculus (mouse). This gene has many orthologs in multiple mammals, such as human, norway rat, pig, cattle, etc. Apo-E protein belongs to a family of fat-binding proteins called apolipoproteins, which combines with fats (lipids) in the body to form molecules called lipoproteins. Increasing studies has demonstrated that apoE-deficient mice exhibit neuronal abnormalities similar to those in Alzheimer's disease and enhanced sensitivity to stroke-associated injuries.

Reconstitution

We recommend that this vial be briefly centrifuged prior to opening to bring the contents to the bottom. Please reconstitute protein in deionized sterile water to a concentration of 0.1-1.0 mg/mL. We recommend to add 5-50% of glycerol (final concentration) and aliquot for long-term storage at -20°C/-80°C. Our default final concentration of glycerol is 50%. Customers could use it as reference.

Shelf Life

The shelf life is related to many factors, storage state, buffer ingredients, storage temperature and the stability of the protein itself. Generally, the shelf life of liquid form is 6 months at -20°C/-80°C. The shelf life of lyophilized form is 12 months at -20°C/-80°C.