

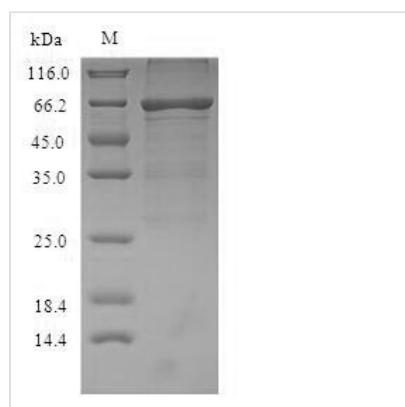


Recombinant Mouse Albumin (Alb)

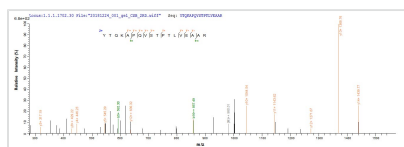
| | |
|--------------------------|---|
| Product Code | CSB-YP001561MO |
| Relevance | Serum albumin, the main protein of plasma, has a good binding capacity for water, Ca ²⁺ , Na ⁺ , K ⁺ , fatty acids, hormones, bilirubin and drugs. Its main function is the regulation of the colloidal osmotic pressure of blood. Major zinc transporter in plasma, typically binds about 80% of all plasma zinc. |
| Abbreviation | Recombinant Mouse Alb protein |
| Storage | The shelf life is related to many factors, storage state, buffer ingredients, storage temperature and the stability of the protein itself. Generally, the shelf life of liquid form is 6 months at -20°C/-80°C. The shelf life of lyophilized form is 12 months at -20°C/-80°C. |
| Uniprot No. | P07724 |
| Product Type | Recombinant Proteins |
| Immunogen Species | Mus musculus (Mouse) |
| Purity | Greater than 90% as determined by SDS-PAGE. Greater than 95% as determined by SEC-HPLC. |
| Sequence | EAHKSEIAHRYNDLGEQHFVKGLVLIASFQYLQKCSYDEHAKLVQEVTDFAKTC VADESAANCDKSLHTLFGDKLCAIPNLRENYGELADCCTKQEPERNECFLQHK DDNPSLPPFERPEAEAMCTSFKENPTTFMGHYLHEVARRHPYFYAPELLYYAE QYNEILTQCCA EADKESCLTPKLDGVKEKALVSSVRQRMKCSSMQKFGERAF KAWAVARLSQTFPNADFAEITKLATDLTKVNKECCHGDLLECADDRAELAKYM CENQATISSKLQTCCDKPLLKKAHCLSEVEHDTMPADLPAIAADFVEDQEVCK NYAEAKDVFLGTFLYEYSRRHPDYSVSLLLRLAKKYEATLEKCCAEANPPACY GTVLAEFQPLVEEPKNLVKTNCDLYEKLGEYGFQNAILVRYTQKAPQVSTPTLV EAARNLGRVGTKCCTLPEDQRLPCVEDYLSAILNRVCLLHEKTPVSEHVTGCC SGSLVERRPCFSALTVDETYVPKEFKAETFTFHSDICTLPEKEKQIKKQTALAEL VKHKPKATAEQLKTVMD DFAQFLDTCKAADKDTCTFSTEGPNLVTRCKDALA |
| Research Area | Cardiovascular |
| Source | Yeast |
| Target Names | Alb |
| Protein Names | Recommended name: Serum albumin |
| Expression Region | 25-608aa |
| Notes | Repeated freezing and thawing is not recommended. Store working aliquots at 4°C for up to one week. |
| Tag Info | N-terminal 6xHis-tagged |
| Mol. Weight | 67.9kDa |
| Protein Length | Full Length of Mature Protein |



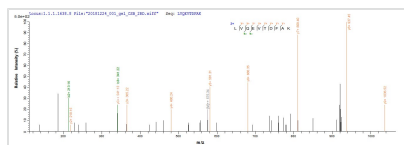
Image



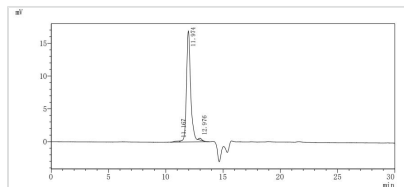
(Tris-Glycine gel) Discontinuous SDS-PAGE (reduced) with 5% enrichment gel and 15% separation gel.



Based on the SEQUEST from database of Yeast host and target protein, the LC-MS/MS Analysis result of CSB-YP001561MO could indicate that this peptide derived from Yeast-expressed Mus musculus (Mouse) Alb.



Based on the SEQUEST from database of Yeast host and target protein, the LC-MS/MS Analysis result of CSB-YP001561MO could indicate that this peptide derived from Yeast-expressed Mus musculus (Mouse) Alb.



The purity of Alb was greater than 95% as determined by SEC-HPLC

Shelf Life

The shelf life is related to many factors, storage state, buffer ingredients, storage temperature and the stability of the protein itself.

Generally, the shelf life of liquid form is 6 months at -20°C/-80°C. The shelf life of lyophilized form is 12 months at -20°C/-80°C.