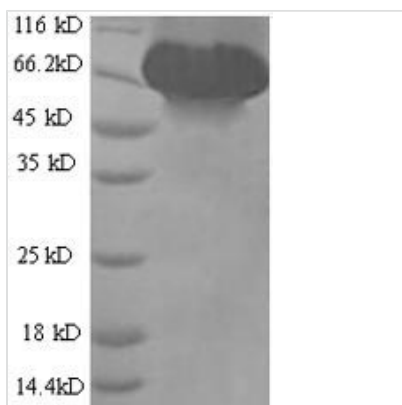




# Recombinant Dog Albumin (ALB)

<b>Product Code</b>	CSB-YP001561DO
<b>Relevance</b>	Serum albumin, the main protein of plasma, has a good binding capacity for water, Ca <sup>2+</sup> , Na <sup>+</sup> , K <sup>+</sup> , fatty acids, hormones, bilirubin and drugs. Its main function is the regulation of the colloidal osmotic pressure of blood. Major zinc transporter in plasma, typically binds about 80% of all plasma zinc.
<b>Abbreviation</b>	Recombinant Dog ALB protein
<b>Storage</b>	The shelf life is related to many factors, storage state, buffer ingredients, storage temperature and the stability of the protein itself. Generally, the shelf life of liquid form is 6 months at -20°C/-80°C. The shelf life of lyophilized form is 12 months at -20°C/-80°C.
<b>Uniprot No.</b>	P49822
<b>Product Type</b>	Recombinant Proteins
<b>Immunogen Species</b>	Canis lupus familiaris (Dog) (Canis familiaris)
<b>Purity</b>	Greater than 90% as determined by SDS-PAGE.
<b>Sequence</b>	EAYKSEIAHRYNDLGEEHFRGLVLVAFSQYLQQCPFEDHVKLAKEVTEFAKAC AAESGANCDKSLHTLFGDKLCTVASLRDKYGDMA DCCEKQEPDRNECFLAH KDDNPGFPPLVAPEPDALCAAFQDNEQLFLGKLYEIARRHPYFYAPELLYYA QQYKGVFAECCQAADKAACLGPKEALREKVLLSSAKERFKCASLQKFGDRAF KAWSVARLSQRFPAKADFAEISKVVTDLT KVHKECCHGDLLECADDRADLAKY MCENQDSISTKLKECCDKPVLEKSQCLAEVERDELPGDLPSLAADFVEDKEVC KNYQEAKDVFLGTFLYEYARRHPEYSVSLLLRLAKEYEATLEKCCATDDPPTC YAKVLDEFKPLVDEPQNLVKTNCELFEKLGEYGFQNALLVRYTKKAPQVSTPT LVEVSRKLGKVGTKCCKKPESERMSCAEDFLSVVLNRLCVLHEKTPVSEKVTK CCSESLVNRRPCFSGLEVDETYVPKEFNAETFTFHADLCTLPEAEKQVKKQTA LVELLKHKPKATDEQLKTVMGDFGAFVEKCCAAENKEGCFSEEGPKLVAAAQ AALV
<b>Research Area</b>	Cardiovascular
<b>Source</b>	Yeast
<b>Target Names</b>	ALB
<b>Protein Names</b>	Recommended name: Serum albuminAlternative name(s): Allergen= Can f 3
<b>Expression Region</b>	25-608aa
<b>Notes</b>	Repeated freezing and thawing is not recommended. Store working aliquots at 4°C for up to one week.
<b>Tag Info</b>	N-terminal 6xHis-tagged
<b>Mol. Weight</b>	67.7kDa
<b>Protein Length</b>	Full Length of Mature Protein
<b>Image</b>	



(Tris-Glycine gel) Discontinuous SDS-PAGE (reduced) with 5% enrichment gel and 15% separation gel.

## Description

Dog Serum albumin (ALB) amino acids 25-608 with a 6xHis-tag at the N-terminus were expressed in the yeast. The resulting protein is the recombinant full-length of mature dog ALB protein. This protein was validated by SDS-PAGE analysis, and its purity is greater than 90%. The reducing SDS-PAGE gel showed a molecular weight band of 65-110 kDa. This recombinant ALB protein may be used to produce specific antibodies or in the studies of ALB-related cardiovascular diseases.

Serum ALB is a multifunctional circulatory protein with the most abundant expression. It is involved in many physiological processes, such as the maintenance of colloid oncotic pressure and microvascular integrity, modulation of metabolic and vascular functions, binding and transportation of substances, and exerting antioxidant activities and anticoagulant effects. Furthermore, ALB is negatively related to inflammatory processes by regulating neutrophil adhesion and cell signaling moieties.

## Shelf Life

The shelf life is related to many factors, storage state, buffer ingredients, storage temperature and the stability of the protein itself. Generally, the shelf life of liquid form is 6 months at -20°C/-80°C. The shelf life of lyophilized form is 12 months at -20°C/-80°C.