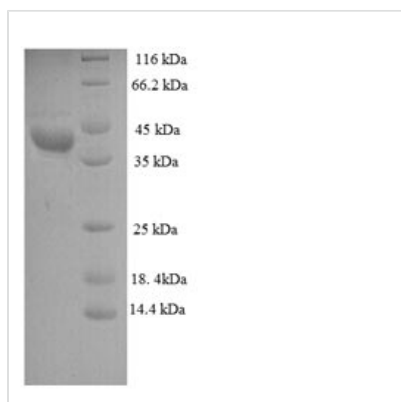




Recombinant Leuconostoc mesenteroides subsp. Cremoris D-lactate dehydrogenase

Product Code	CSB-RP186974Ba
Abbreviation	Recombinant Leuconostoc mesenteroides subsp. Cremoris D-lactate dehydrogenase protein
Storage	The shelf life is related to many factors, storage state, buffer ingredients, storage temperature and the stability of the protein itself. Generally, the shelf life of liquid form is 6 months at -20°C/-80°C. The shelf life of lyophilized form is 12 months at -20°C/-80°C.
Uniprot No.	P51011
Product Type	Recombinant Protein
Immunogen Species	Leuconostoc mesenteroides subsp. cremoris
Purity	Greater than 90% as determined by SDS-PAGE.
Sequence	MKIFAYGIRDDEKPSLEEWKAANPEIEVDYTQELLTPETAKLAEGSDSAVVYQQ LDYTRETALTALANVGVTNLSLRNVGTDNIDFDAAREFNFNISNVPVYSPNAIAE HSMLQLSRLRLRTKALDAKIAKRDLRWAPTTGREMRMQTVGVIGTGHIGRVAI NILKGFGAKVIAYDKYPNAELQAEGLYVDTLDELYAQADAISLYVPGVPENHHLI NADAIKMKDGVVIMNAARGNLMDIDAIDGLNSGKISDFGMDVYENEVACSMK IGLVKNSPDAKIADLIARENVMITPHTAFYTTKAVLEMVHQSFDAAVAFKGEKP AIAVEY
Research Area	Others
Source	E.coli
Expression Region	1-331aa
Notes	Repeated freezing and thawing is not recommended. Store working aliquots at 4°C for up to one week.
Tag Info	N-terminal 6xHis-tagged
Mol. Weight	40.3kDa
Protein Length	Full Length

Image



(Tris-Glycine gel) Discontinuous SDS-PAGE (reduced) with 5% enrichment gel and 15% separation gel.



Reconstitution

We recommend that this vial be briefly centrifuged prior to opening to bring the contents to the bottom. Please reconstitute protein in deionized sterile water to a concentration of 0.1-1.0 mg/mL. We recommend to add 5-50% of glycerol (final concentration) and aliquot for long-term storage at -20°C/-80°C. Our default final concentration of glycerol is 50%. Customers could use it as reference.

Shelf Life

The shelf life is related to many factors, storage state, buffer ingredients, storage temperature and the stability of the protein itself. Generally, the shelf life of liquid form is 6 months at -20°C/-80°C. The shelf life of lyophilized form is 12 months at -20°C/-80°C.